

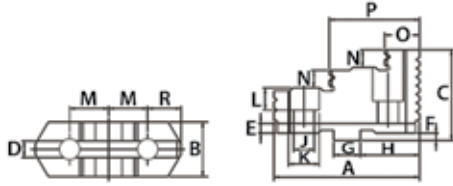
Universal Lathe Chucks & Accessories



Spare Jaws for PS Series Universal

Hard jaws, supplied as supplement or as spares, must be ground on the chuck, otherwise centering accuracy does not conform the limits

Hard Top Jaws – 3-Piece Sets

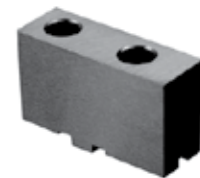
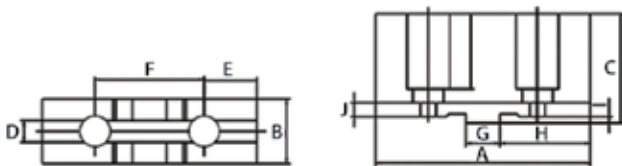


For Chuck Diameter (Inch)	B (Inch)	C (Inch)	D (Inch)	E (Inch)	F (Inch)	G (Inch)	H (Inch)	J (Inch)	K (Inch)	M (Inch)	N (Inch)	A OAL (Inch)	O (Inch)	P (Inch)	Weight (lbs)	Code
5	0.87	1.52	0.31	0.16	0.13	0.50	0.89	0.35	0.55	0.62	0.31	2.20	0.57	1.38	0.93	356300
6	0.98	1.63	0.31	0.16	0.13	0.50	1.12	0.43	0.67	0.75	0.33	2.64	0.81	1.69	1.20	410140
8	1.18	1.77	0.31	0.16	0.13	0.50	1.37	0.43	0.67	0.87	0.41	3.15	0.98	2.09	2.10	410141
10	1.42	2.09	0.50	0.16	0.13	0.75	1.56	0.55	0.79	1.06	0.53	3.74	1.14	2.52	3.20	410142
12	1.65	2.40	0.50	0.16	0.13	0.75	1.87	0.55	0.79	1.25	0.69	4.25	1.22	3.01	5.10	410143
16	1.77	2.76	0.50	0.16	0.25	0.75	2.25	0.71	1.00	1.50	0.69	5.00	1.85	3.46	7.30	410144
20	1.98	3.42	0.50	0.16	0.25	0.75	2.25	0.87	1.30	1.50	0.79	5.16	2.05	3.23	14.40	410145
25 & 32	2.05	3.42	0.50	0.16	0.25	0.75	2.25	0.87	1.30	1.50	0.79	5.16	2.05	3.23	27.10	356301

Hard Top Jaws – 4-Piece Sets

For Chuck Diameter (Inch)	B (Inch)	C (Inch)	D (Inch)	E (Inch)	F (Inch)	G (Inch)	H (Inch)	J (Inch)	K (Inch)	M (Inch)	N (Inch)	A OAL (Inch)	O (Inch)	P (Inch)	Weight (lbs)	Code
5	0.87	1.52	0.31	0.16	0.13	0.50	0.89	0.35	0.55	0.62	0.31	2.20	0.57	1.38	1.25	356303
6	0.98	1.63	0.31	0.16	0.13	0.50	1.12	0.43	0.67	0.75	0.33	2.64	0.81	1.69	1.60	356304
8	1.18	1.77	0.31	0.16	0.13	0.50	1.37	0.43	0.67	0.87	0.41	3.15	0.98	2.09	2.80	356305
10	1.42	2.09	0.50	0.16	0.13	0.75	1.56	0.55	0.79	1.06	0.53	3.74	1.14	2.52	4.27	356306
12	1.65	2.40	0.50	0.16	0.13	0.75	1.87	0.55	0.79	1.25	0.69	4.25	1.22	3.01	6.80	356307
16	1.77	2.76	0.50	0.16	0.25	0.75	2.25	0.71	1.00	1.50	0.69	5.00	1.85	3.46	9.74	356308
20	1.98	3.42	0.50	0.16	0.25	0.75	2.25	0.87	1.30	1.50	0.79	5.16	2.05	3.23	19.20	356309
25	2.05	3.42	0.50	0.16	0.25	0.75	2.25	0.87	1.30	1.50	0.79	5.16	2.05	3.23	36.20	356310

Soft Top Jaws – 1 Piece



For Chuck Diameter (Inch)	A (Inch)	B (Inch)	C (Inch)	D (Inch)	E (Inch)	F (Inch)	G (Inch)	H (Inch)	I (Inch)	J (Inch)	M Thread	Weight (lbs)	Code
5	2.52	0.87	1.52	0.31	0.59	1.25	0.50	1.00	0.13	0.16	5/16-18	0.66	356314
6	3.07	1.00	1.63	0.31	0.84	1.50	0.50	1.34	0.13	0.16	3/8-16	1.01	410146
8	3.54	1.06	1.71	0.31	0.95	1.75	0.50	1.57	0.13	0.16	3/8-16	1.43	410147
10	4.17	1.28	2.03	0.50	1.08	2.12	0.75	1.77	0.13	0.16	1/2-13	2.54	410148
12	4.72	1.57	2.16	0.50	1.21	2.50	0.75	2.09	0.13	0.16	1/2-13	3.53	410149
16	5.51	1.65	2.54	0.50	1.35	3.00	0.75	2.48	0.25	0.16	5/8-11	4.85	410150
20	5.51	1.97	2.93	0.50	1.35	3.00	0.75	2.48	0.25	0.16	3/4-10	5.29	410151
25 & 32	6.30	2.05	3.29	0.50	1.35	3.00	0.75	2.48	0.25	0.16	3/4-10	9.26	411044