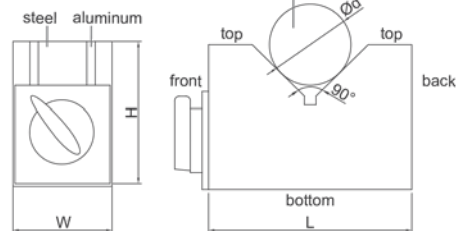


Magnetic V-Block Sets

- Hold cylindrical workpieces for inspection, not suitable for machining due to low magnetic force
- Parallelism of V groove to bottom and back sides: 10µm
- Height difference of a matched pair: 10µm
- Two V-blocks per set
- Hardness HRB70

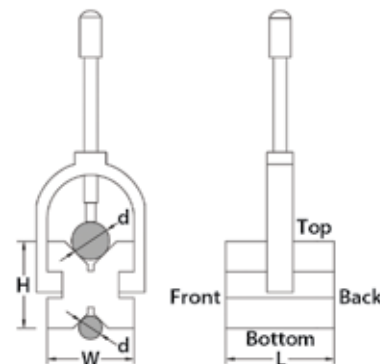
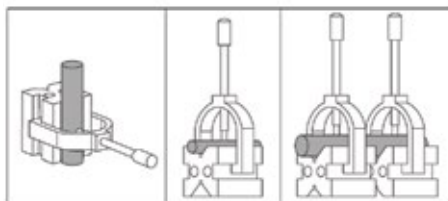


Length x Width x Height (mm)	Ød Range of Shafts (mm)	Magnetic Force (kgf)	INSIZE No.	Code
70 x 40 x 50	6-46	8	6891-1	283758
150 x 50 x 100	6-125	14	6891-3	283760

V-Block Sets



- Hold cylindrical work pieces for inspection and machining
- Hardened to HRC 60±2
- Parallelism of both v-grooves to top and bottom: 3µm
- Squareness of both v-grooves to front and back: 3µm
- Height difference of a matched pair: 3µm
- V-groove on top for large shafts
- V-groove on bottom for small shafts

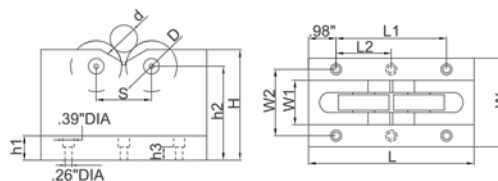
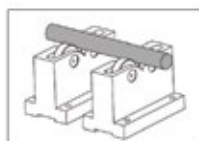


Description	Length x Width x Height (mm)	Ød Range of Shafts (mm)	INSIZE No.	Code
Matched pair	25 x 20 x 20	3-20	6896-10	877407

Roller Bearing V-Blocks



- Bearings prevent damage to the work piece
- Suitable for heavy work pieces (load capacity: 1100 lbs)
- Parallelism of bearings to bottom (when two v-blocks are closed): 0.0002"



W1 (Inch)	W2 (Inch)	h1 (Inch)	h2 (Inch)	h3 (Inch)	L1 (Inch)	L2 (Inch)	S (Inch)	INSIZE No.	Code
0.87	1.73	0.79	3.35	0.47	3.94	-	2.36	6888-1	877034
1.57	2.36	0.87	3.35	0.47	3.94	-	1.97	6888-2	877198
2.36	3.15	1.18	4.88	0.79	7.09	3.54	4.72	6888-3	877199

Length x Width x Height (Inch)	D Diameter of Bearings (Inch)	d Range of Shafts Diameter (Inch)	Load Capacity (lbs)	INSIZE No.	Code
5.9 x 2.4 x 3.9	1.65	0.98-2.76	1100	6888-1	877034
5.9 x 3.1 x 3.9	1.85	0.2-2.17	2200	6888-2	877198
9.1 x 3.9 x 5.9	2.83	2.76-7.87	2200	6888-3	877199