

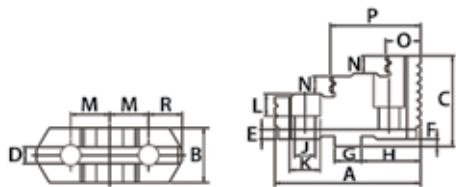
## Precision Lathe Chucks & Accessories



### Spare Jaws for PSL Series (continued)

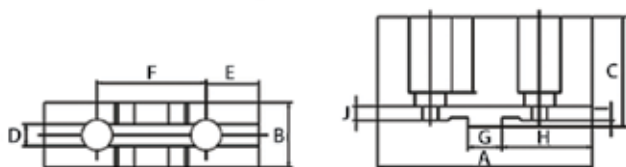
Hard jaws, supplied as supplement or as spares, must be ground on the chuck, otherwise centering accuracy does not conform the limits

#### Hard Top Jaws – 3-Piece Sets



For Chuck Diameter (Inch)	B (Inch)	C (Inch)	D (Inch)	E (Inch)	F (Inch)	G (Inch)	H (Inch)	J (Inch)	K (Inch)	M (Inch)	N (Inch)	A OAL (Inch)	O (Inch)	P (Inch)	Weight (lbs)	Code
16	1.77	2.76	0.50	0.16	0.25	0.75	2.25	0.71	1.00	1.50	0.69	5.00	1.85	3.46	7.30	410144
20	1.98	3.42	0.50	0.16	0.25	0.75	2.25	0.87	1.30	1.50	0.79	5.16	2.05	3.23	14.40	410145
26 & 32	2.05	3.42	0.50	0.16	0.25	0.75	2.25	0.87	1.30	1.50	0.79	5.16	2.05	3.23	27.10	356302

#### Soft Top Jaws – 1-Piece



For Chuck Diameter (Inch)	A (Inch)	B (Inch)	C (Inch)	D (Inch)	E (Inch)	F (Inch)	G (Inch)	H (Inch)	I (Inch)	J (Inch)	Weight (lbs)	M Thread	Code
16	5.51	1.65	2.54	0.50	1.35	3.00	0.75	2.48	0.25	0.16	4.85	5/8-11	410150
20	5.51	1.97	2.93	0.50	1.35	3.00	0.75	2.48	0.25	0.16	5.29	3/4-10	410151
26 & 32	6.30	2.05	3.29	0.50	1.35	3.00	0.75	2.48	0.25	0.16	9.26	3/4-10	411044

#### Spare Parts for PSL Series

##### Scroll Plates – 1 Piece



For Chuck Diameter (Inch)	Code
15.75	410172
20.00	410173

##### Keys – 1 Piece



For Chuck Diameter (Inch)	Code
15.75	411012
20.00	411014

##### Pinions – 1 Piece



For Chuck Diameter (Inch)	Code
15.75	410174
20.00	410175

##### Pinion Screw – 1 Piece



For Chuck Diameter (Inch)	Code
20.00	411016

##### Mounting Bolts – 1 Piece



For Chuck Diameter (Inch)	Code
15.75	410179
20.00	410180