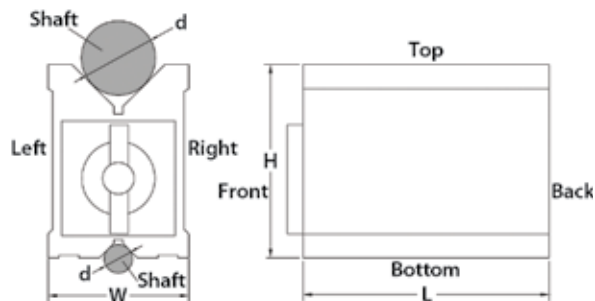




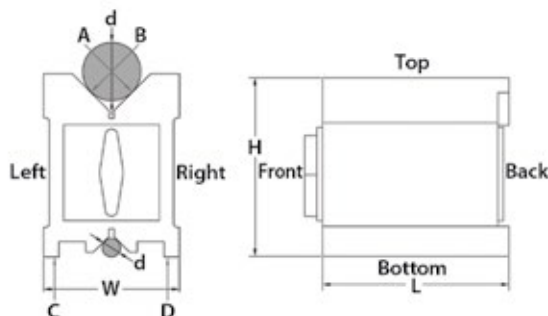
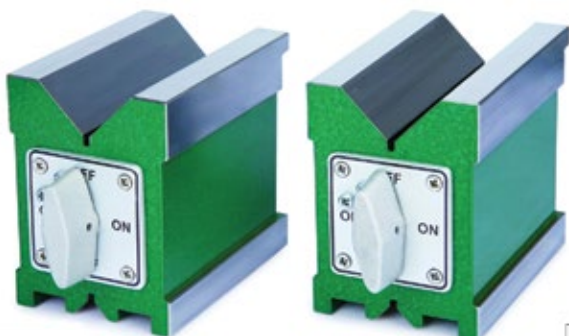
### Magnetic V-Blocks



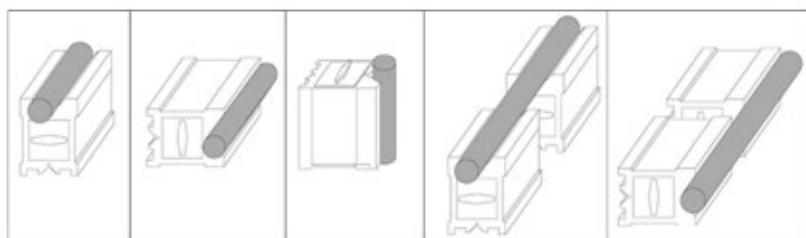
- Hold cylindrical workpieces for inspection and machining
- Parallelism of v-grooves to top, bottom, left, and right side: 0.0004"
- Squareness of v-grooves to back side: 0.0004"
- V-groove on top for large shafts
- V-groove on bottom for small shafts
- Not suitable for steel or iron surfaces



Description	Length x Width x Height	d Range of Shafts	Magnetic Force	INSIZE No.	Code
Single block	3.1" x 2.8" x 3.7"	Ø0.24" to 2.64"	14llbf	6801-1201	877035
Single block	100mm x 70mm x 95mm	Ø6-67mm	80kgf	6801-1202	283754
Single block	120mm x 70mm x 95mm	Ø6-67mm	96kgf	6801-1203	283755



- Hardened with high accuracy and strong magnetic force
- For grinding, light milling, drilling and inspection of round and square jobs
- Working surfaces hardened to HRC60±2
- Magnetic force on top, bottom and two v-grooves
- Suitable for cast iron and/or granite surface plates
- Parallelism of v-grooves to top, bottom, left, and right side: 0.0002"
- Squareness of v-grooves to back side: 0.0002"
- Height difference of a matched pair: 0.0002"
- V-groove on top for large shafts
- V-groove on bottom for small shafts
- Suitable for cast iron and granite surface plates



Description	Length x Width x Height (Inch)	d Range of Shafts (Inch)	Magnetic Force (lbf)	INSIZE No.	Code
Matched pair	3 x 2.2 x 3	Ø0.2 to 1.57	165	6889-1	877036

BLOCKS & PARALLELS