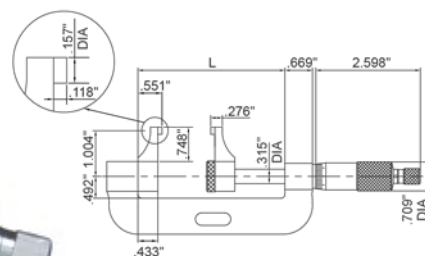


Caliper Type Micrometer



- Graduation .001"
- Non-rotating spindle Ratchet stop
- Carbide measuring faces
- Supplied in fitted storage case

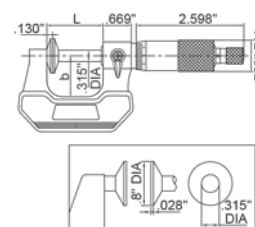


| Range (Inch) | Accuracy (Inch) | L (Inch) | INSIZE No. | Code |
|--------------|-----------------|----------|------------|--------|
| 0-1 | 0.0004 | 2.205 | 3238-1 | 281595 |

Disk Micrometer



- Measure root tangent length of gear
- Ratchet stop
- Supplied with setting standards

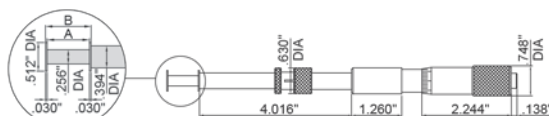


| Range (Inch) | Graduation (Inch) | Accuracy (Inch) | Parallelism (Inch) | L (Inch) | b (Inch) | INSIZE No. | Code |
|--------------|-------------------|-----------------|--------------------|----------|----------|------------|--------|
| 0-1 | 0.0001 | 0.00015 | 0.0002 | 1.339 | 0.945 | 3282-1 | 281575 |

Groove Micrometer



- Measure width of grooves inside bores
- Non-rotating spindle
- Two graduations for inside and outside measurement



| Range (outside A) (Inch) | Range (inside B) (Inch) | Graduation (Inch) | Accuracy (Inch) | INSIZE No. | Code |
|--------------------------|-------------------------|-------------------|-----------------|------------|--------|
| 0-1 | 0.06-1.05 | 0.001 | 0.0004 | 3287-1 | 281908 |
| 1-2 | 1.05-2.05 | 0.001 | 0.0004 | 3287-2 | 281909 |