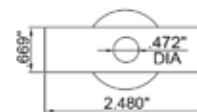
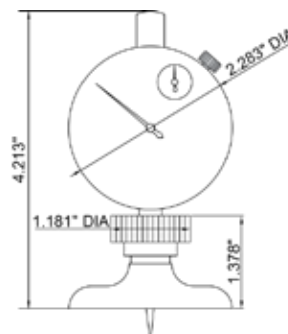


## Dial Depth Gage



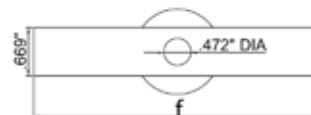
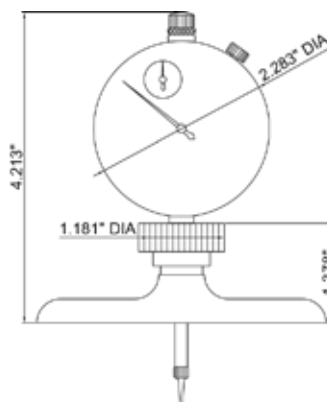
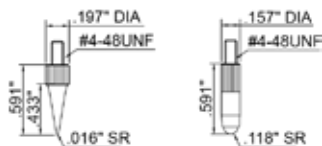
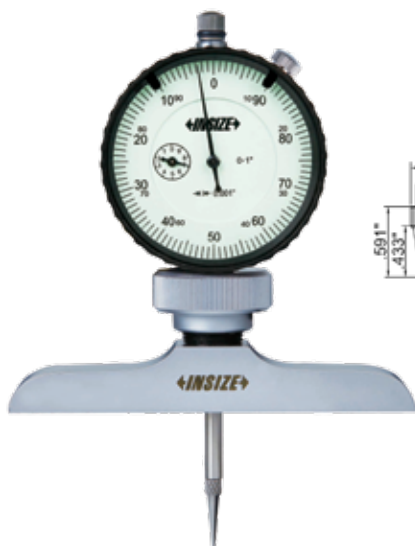
- Indicator graduation: 0.001"
- Indicator stroke: 0.5"
- Stainless steel base
- Supplied with pointed tip and ball tip
- Supplied in fitted storage case

Range (Inch)	Accuracy (Inch)	Base (Inch)	INSIZE No.	Code
0-1.2	±0.0012	2.480 x 0.669	2341-E1	283207

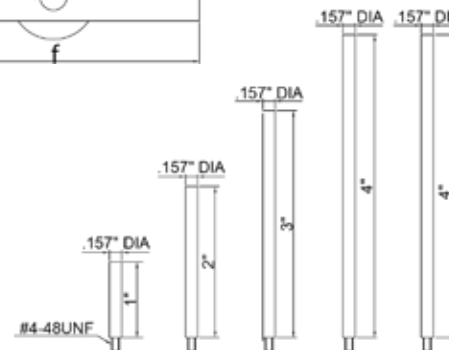
## Dial Depth Gage



With Extension Rods



- Indicator graduation: 0.001"
- Indicator stroke: 1"
- Stainless steel base
- Extension rods: 1" (1pc.), 2" (1pc.) 3" (1pc.), 4" (2pcs.)
- Supplied with pointed tip and ball tip
- Supplied in fitted storage case



Range (Inch)	Accuracy (Inch)	L (Inch)	a (Inch)	Øb (Inch)	Øc (Inch)	d (Inch)	Øe (Inch)	f (Inch)	INSIZE No.	Code
0-1.2	±0.002	4.213	1.378	1.181	2.283	0.669	0.472	2.480	2341-2E1	876240
0-1.2	±0.002	4.213	1.378	1.181	2.283	0.669	0.472	3.996	2341-2E2	876241