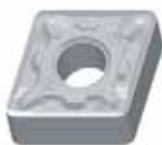
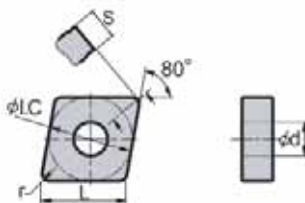


Turning Inserts CNMG DM Cermet for Medium Machining



NEGATIVE 80° RHOMBIC

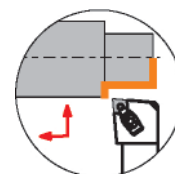


Cermet

YNG151

ANSI	ISO	L (Inch)	ØI.C. (Inch)	S (Inch)	Ød (Inch)	r (Inch)	Code
CNMG431-DM	CNMG-120404-DM	0.508	0.500	0.187	0.203	0.016	573566
CNMG432-DM	CNMG-120408-DM	0.508	0.500	0.187	0.203	0.031	573630

To be used with holders: PCBNR/L; PCLNR/L; MCLNR/L; MCBNR/L; S_ _-PCLNR/L; S_ _-MCLNR/L



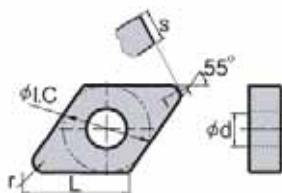
EXAMPLE: MCLNR



DNMG DF Cermet for Finishing



NEGATIVE 55° RHOMBIC

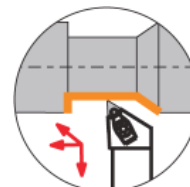


Cermet

YNG151

ANSI	ISO	L (Inch)	ØI.C. (Inch)	S (Inch)	Ød (Inch)	r (Inch)	Code
DNMG331-DF	DNMG110404-DF	0.457	0.375	0.187	0.150	0.016	574030
DNMG431-DF	DNMG150404-DF	0.610	0.500	0.187	0.203	0.016	574070

To be used with holders: PDJNR/L; PDNNR/L; MDJNR/L; MDPNN; S_ _-MDUNR/L; S_ _-MDSNR/L



EXAMPLE: MDJNR