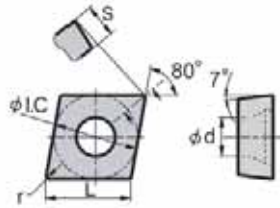


Turning Inserts CCMT HF Cermet for Finishing



POSITIVE 80° RHOMBIC

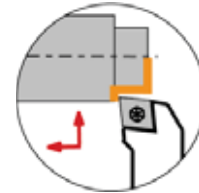


Cermet

YNG151

ANSI	ISO	L (Inch)	ØI.C. (Inch)	S (Inch)	Ød (Inch)	r (Inch)	Code
CCMT2(1.5)1-HF	CCMT-060204-HF	0.252	0.250	0.094	0.110	0.016	573164
CCMT3(2.5)0-HF	CCMT-09T302-HF	0.382	0.375	0.156	0.173	0.008	573244
CCMT3(2.5)1-HF	CCMT-09T304-HF	0.382	0.375	0.156	0.173	0.016	573246
CCMT3(2.5)2-HF	CCMT-09T308-HF	0.382	0.375	0.156	0.173	0.031	573268

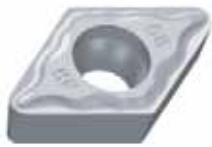
To be used with holders: SCACR/L; SCLCR/L; S_ _-SCLCR/L; S_ _-SCFCR



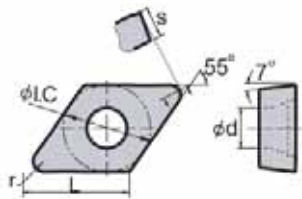
EXAMPLE: SCLCR



DCMT HF Cermet for Finishing



POSITIVE 55° RHOMBIC

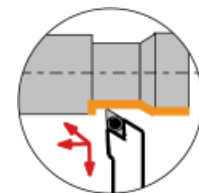


Cermet

YNG151

ANSI	ISO	L (Inch)	ØI.C. (Inch)	S (Inch)	Ød (Inch)	r (Inch)	Code
DCMT2(1.5)1-HF	DCMT070204-HF	0.307	0.250	0.094	0.110	0.016	573822
DCMT3(2.5)1-HF	DCMT11T304-HF	0.457	0.375	0.156	0.173	0.016	573882
DCMT3(2.5)2-HF	DCMT11T308-HF	0.457	0.375	0.156	0.173	0.031	573926

To be used with holders: SDACR/L; SDJCR/L; SDNCN; S_ _-SDQCR/L; S_ _-SDUCR/L; S_ _-SDZCR/L



EXAMPLE: SDJCR