

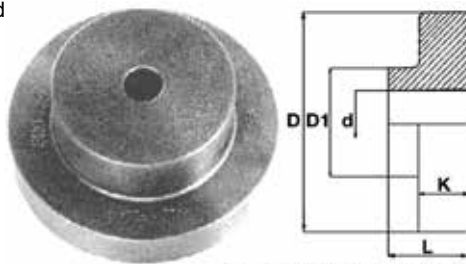
Lathe Chuck Accessories

For Bison Lathe Chucks



Spindle Back Plates – Cast Iron

Adapters for threaded spindles 3-jaw and 4-jaw universal



For 4-jaw independent only

Series 8205

For Chuck Diameter (Inch)	D (Inch)	d (Inch)	D1 (Inch)	K (Inch)	L (Inch)	Weight (lbs)	Code
3, 4, 5	5.20	0.71	3.46	0.98	2.20	4.4	355663
6-1/4	6.70	0.98	3.46	0.98	2.20	12.0	355664
8	8.30	0.98	4.02	1.18	2.83	22.0	355665
10	10.24	1.57	4.53	1.26	3.54	34.0	355666
12-1/2	12.30	1.97	6.77	1.26	4.02	66.0	355667
15-3/4	16.34	2.76	9.06	2.17	4.92	154.0	355668
20	20.28	3.15	9.84	2.56	5.98	267.0	355669
25	25.20	4.72	11.81	3.35	7.09	496.0	355670

Series 8262

For Chuck Diameter (Inch)	D (Inch)	d (Inch)	D1 (Inch)	K (Inch)	L (Inch)	Weight (lbs)	Code
6-1/4	3.94	0.79	2.95	1.18	2.17	8	355671
5	5.12	1.18	3.74	1.38	2.56	11	355672
10	7.09	1.57	4.72	1.97	3.35	25	355673
12-1/2	8.66	2.17	5.51	2.36	3.74	49	355674
15-3/4	10.63	2.95	7.48	2.36	5.51	95	355675
20, 25	11.02	3.54	7.87	2.36	5.51	99	355676
32	15.75	3.54	8.66	2.36	5.51	177	355677

A Type

Semi machined adapters for plain back chucks, with spotted holes for A1 and A2 spindle noses



For Chuck Diameter (Inch)	Taper Size	Code	For Chuck Diameter (Inch)	Taper Size	Code
5	A-6	355650	12	A-8	355658
5	A-8	355651	16	A-8	355659
6	A-5	355652	16	A-11	355660
8	A-5	355653	20	A-11	355661
8	A-6	355654	25	A-11	355662
10	A-6	355655			
10	A-8	355656			
1	A-6	355657			

Studs

Camlock Studs – D1 Style – Metric



Sold individually

Taper Size	Diameter (Inch)	No. of Studs Required	Thread	Code
D1-3	9/16	3	M10 x 1	355678
D1-4	5/8	3	M10 x 1	355679
D1-5	3/4	6	M12 x 1	355680
D1-6	7/8	6	M16 x 1.5	355681
D1-8	1	6	M20 x 1.5	355682
D1-11	1-3/16	6	M22 x 1.5	355683
D1-15	1-3/8	6	M24 x 1.5	355684

DIN Standard Studs – DIN 55027



Sold individually

Taper Size	Diameter (Inch)	No. of Studs Required	Thread	Code
C4	0.768	3	M10	355691
C5	0.770	4	M10	355692
C6	0.845	4	M12	355693
C8	1.065	4	M16	355694
C11	1.337	6	M20	355695