

Lathe Chuck Accessories

For Bison Self-Centering & Independent Lathe Chucks

Keys for 3-Jaw & 4-Jaw Chucks & 4-Jaw Independent Chucks



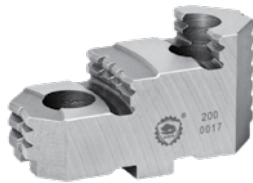
For 3-Jaw & 4-Jaw Chucks – 1 Piece

For 4-Jaw Independent Chucks – 1 Piece

For Chuck Diameter (Inch)	Square (Inch)	Code
3	15/64	355861
4, 5	3/8	355862
10, 12	9/16	355864
16	11/16	355865
20, 25	3/4	355866
32	3/4	355867

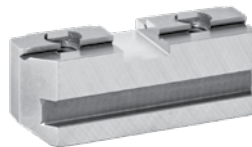
For Chuck Diameter (Inch)	Square (Inch)	Code
5, 6	9/32	355868
8, 10	7/16	355869
12, 16	9/16	355870
20, 25	11/16	355871
32	3/4	355872

Hard Top Jaws
1 Piece



For Chuck Diameter (Inch)	Code
8	355873
10	355874
12	355875
20	355877

Hard Master Jaws
1 Piece



For Chuck Diameter (Inch)	Code
8	355880
10	355881
12	355882
16	355883

Hard Solid Reversible Jaws
1 Piece



For Chuck Diameter (Inch)	Code
8	355898
10	355899
12	355900
25	355903
32	355904

Operating Screws – 1 Piece



For Chuck Diameter (Inch)	Code	For Chuck Diameter (Inch)	Code
3	355887	12	355891
5, 6	355888	16	355892
8	355889	20	355893
10	355890	25	355894
		32	355895

Thrust Bearings – 1 Piece



For Chuck Diameter (Inch)	Code	For Chuck Diameter (Inch)	Code
5, 6	355906	16	355910
8	355907	20	355911
10	355908	25	355912
12	355909	32	355913