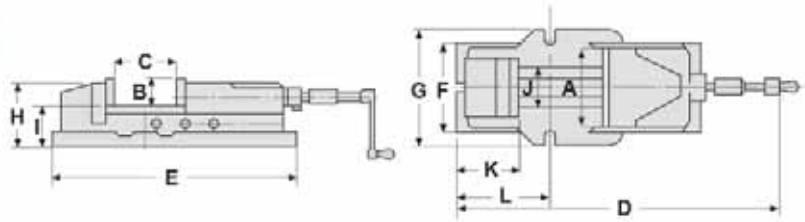


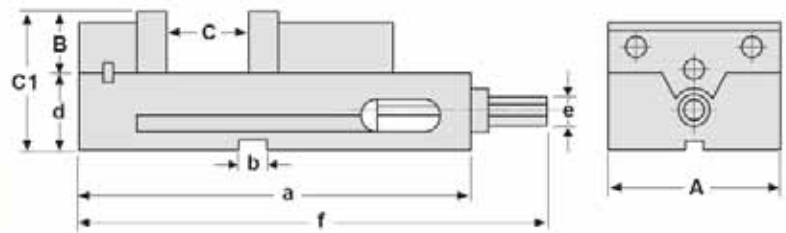
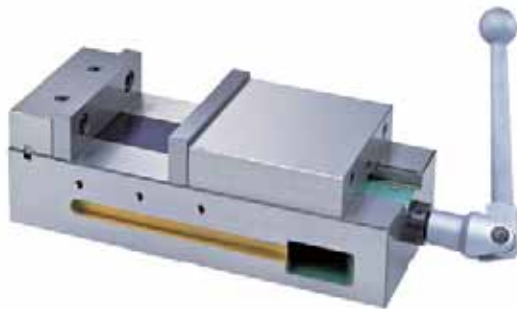
Hydraulic Machine Visers



- Constructed with a hydraulic cylinder which absorbs cutting vibration and the precision of machining while maintaining a high clamping force
- Vise body is made of high tensile cast iron and slideways are hardened and ground to ensure rigidity, durability and minimal deformation
- Jaws are made of special hardened alloy steel and are precision ground

Model	A (mm)	B (mm)	C (mm)	D (mm)	E (mm)	F (mm)	G (mm)	H (mm)	I (mm)	J (mm)	K (mm)	L (mm)	Clamping Force (kg)	Body Weight (kg)	Base Weight (kg)	Code
HH-100	100	36	170	525	430	130	160	94	60	78	100	155	2,500	16	6	277050
HH-125	125	46	220	670	540	165	185	118	72	97	117	185	3,500	33	7	277052
HH-150	150	51	300	800	620	200	240	133	82	116	125	207	4,500	54	16	277054
HH-200	200	62	300	900	700	225	280	160	100	160	150	265	8,500	90	20	277056

Lock II Machine Vise



- Ideal design for CNC machining applications
- No coolant through design enables "ganging" a series of these vises side-by-side on the machine table
- Minimum center-to-center machining distance when vises are ganged together
- Reduces set up time and provides cost savings
- Both sides are precision ground parallel to each other and perpendicular to the base
- Vise can also be used in a vertical position due to it's ground surfaces
- Perpendicularity to bottom: 0.01mm
- Parallelism of sides: 0.02mm
- Fixed jaw located and held in position by keyway

Model	A (mm)	B (mm)	C (mm)	a (mm)	b (mm)	c1 (mm)	d (mm)	e (mm)	f (mm)	Weight (kg)	Code
HMC-6"	156	44	146	370	18	119	75	19	438	32	277059