

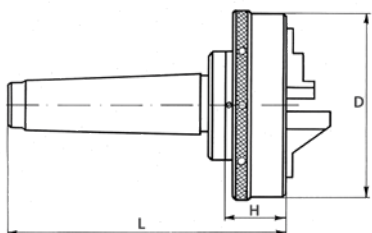
Quick Clamping Lathe Chuck Adapters



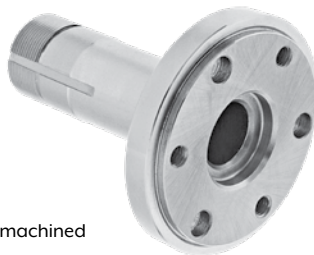
Morse Taper Series 8283



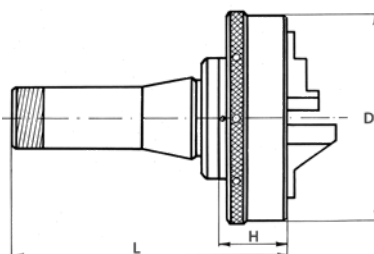
- Fully machined



5C Series 8287



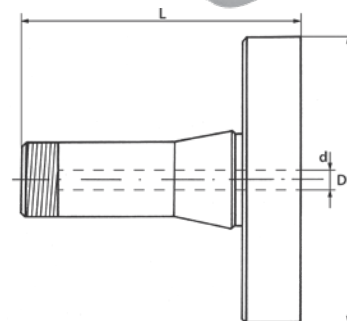
- Fully machined



5C Blank Series 8289



- Semi-finished



D (Inch)	Morse Taper	L (Inch)	H (Inch)	Code
4	3	5.51	1.57	355554
5	3	5.59	1.89	355556
5	4	6.50	1.89	355557
6	5	7.68	2.05	355558

D (Inch)	L (Inch)	H (Inch)	ØHole (Inch)	Code
5	5.75	1.89	0.87	355560
6	5.83	2.05	0.87	355561

D (Inch)	Shank	ØHole (Inch)	L (Inch)	Thread	Code
3		0.87	4.41	1-1/4-20	355562
4	5C	0.87	4.41	1-1/4-20	355563
5	5C	0.87	4.41	1-1/4-20	355563
6		0.87	4.41	1-1/4-20	355563

Universal Lathe Chucks

Cast Iron – 2-Piece Jaws – 2-Jaw Self-Centering

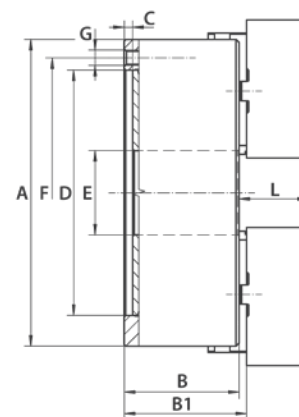
Plain Back – Series 3105



- Cast iron
- Plain back (Back plates required)
- Hardened and ground working surfaces
- Balanced scroll plate

Standard Accessories:

- 1 set of soft top jaws
- 1 set of hard master jaws
- 1 wrench
- 1 hex key



A (Inch)	B (Inch)	B1 (Inch)	C (Inch)	D H7 (Inch)	E (Inch)	F (Inch)	G	L (Inch)	Weight (lbs)	Code
6.30	2.54	2.73	0.16	4.92	1.65	5.51	6 x M10	1.69	22.05	355297
7.87	2.95	3.14	0.16	6.30	2.17	6.93	6 x M10	1.77	38.58	355298
9.84	3.35	3.50	0.20	7.87	2.99	8.82	6 x M12	2.09	63.93	355299
12.40	3.70	3.90	0.20	10.24	4.06	11.26	6 x M16	2.24	110.23	355300
15.75	4.13	4.48	0.20	12.99	5.35	14.25	6 x M16	2.64	187.39	355301