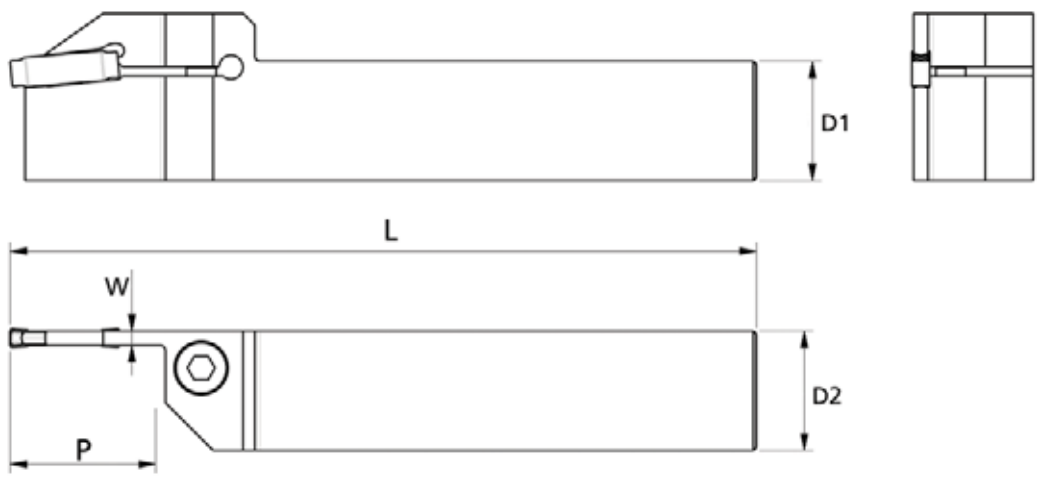


Grooving, Parting and Threading

Parting

RILT PNG-R/L for Parting Inserts



Left Hand

Type RILT PNG	D2 (Inch)	L (Inch)	W (Inch)	P Max. (Inch)	Applicable Inserts	Code
L 0.750-0.118 (3mm)	0.75	5.00	0.094	0.98	GNTX/GCTXX	490252

Right Hand

Type RILT PNG	D2 (Inch)	L (Inch)	W (Inch)	P Max. (Inch)	Applicable Inserts	Code
R 0.750-0.118 (3mm)	0.75	5.00	0.094	0.98	GNTX/GCTXX	490250

Inserts

MULTI-MAT® Parting Inserts- NN: All Purpose Chipbreaker



Coated Grades - PVD

LT10



ANSI	ISO	L (Inch)	R (Inch)	Code
GCTX 2002 NN	GCTX 2002 NN	0.078	0.009	530127
GCTX 3003 NN	GCTX 3003 NN	0.118	0.009	530128
GNTX 2002 NN	GNTX 2002 NN	0.078	0.007	530131
GNTX 3003 NN	GNTX 3003 NN	0.118	0.007	530132

GCTX: 2 cutting edges; GNTX: 4 cutting edges