

## Precision Lathe Chucks

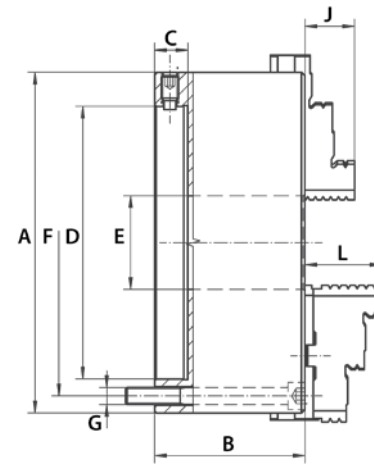
Steel – 2-Piece Jaws – 3-Jaw & 6-Jaw Set Tru



- Hardened and ground working surfaces
- Balanced scroll plate
- Repeatability: 0.0006"
- Fine adjustment radially set screws provide nearly 0 run-out
- Clamped workpiece is adjusted to the required concentricity by means of 4 (8 for sizes 16", 20" and 25") radially arranged adjusting screws
- Made for universal use, but particularly advantageous for grinding machines, indexing heads and lathes
- Mounted on the machine tool spindle from the back of the chuck by using a back plate

**Standard Accessories:**

- 1 set of hard top jaws
- 1 set of hard master jaws
- 1 wrench
- 1 hex key



See 322 for Clamping Ranges

### 3-Jaw Set Tru – Series 3565 / 6-Jaw Set Tru – Series 3865

A (Inch)	B (Inch)	C (Inch)	D (Inch)	E (Inch)	F (Inch)	G	J (Inch)	L (Inch)	3-Jaw		6-Jaw	
									Weight (lbs)	Code	Weight (lbs)	Code
6.30	2.70	0.71	3.39	1.65	5.51	3 x M10	1.26	1.69	20.06	355120	23.15	355113
7.87	3.07	0.79	4.33	2.17	6.93	3 x M10	1.14	1.77	34.17	355121	38.58	355114
9.84	3.50	0.79	5.71	2.99	8.92	3 x M12	1.34	2.09	57.76	355122	72.75	355115
12.40	3.79	0.79	7.09	4.06	11.26	3 x M16	1.69	2.24	102.51	355123	123.46	355116
15.75	4.84	0.87	11.78	5.35	6.75	6 x M16	2.17	2.64	198.42	355124	218.26	355117
19.69	5.67	1.18	16.03	7.48	9.25	6 x M20	2.36	3.11	376.99	355125	396.83	355118
24.80	5.91	1.18	16.03	9.92	13.00	6 x M20	2.76	3.43	665.80	355126	718.71	355119