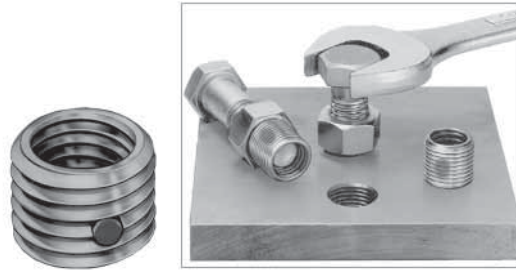


Re-Nu Thread Inserts



- An inexpensive threaded insert designed to be an easy method of repairing damaged threads (Special tools not required)
- Used in magnesium, aluminum, cast iron, copper, masonite, plastics
- For load bearing threads in any material
- Nylon locking element in the external thread automatically locks the insert in place (Will not back out or vibrate loose)
- Bolts and screws can be inserted and removed without insert movement
- It is recommended a 90° countersink 1/32" larger than the major diameter of the mating thread to prevent damaging the element and reducing the locking torque
- Re-Nu Threads are left soft to allow altering
- Re-Nu-Threads have standard external threads that permit use of standard drills and taps.

1. Drill hole, countersink (Tap drill size given in dimension charts)
2. Tap hole same size as external thread
3. Turn insert into place with a bolt and lock nut and locking element holds in place

Steel

Zinc Plate Finish (Nylon Pellet Locking Element)

Internal Thread	External Thread	Length (Inch)	Tap Drill Size	Code	Internal Thread	External Thread	Length (Inch)	Tap Drill Size	Code
1/4 - 20	7/16 - 14	7/16	U	718554	1/2 - 13	3/4 - 10	21/32	21/32	718561
1/4 - 28	7/16 - 14	7/16	U	718555	1/2 - 20	3/4 - 10	21/32	21/32	718562
5/16 - 18	1/2 - 13	31/64	27/64	718556	5/8 - 11	7/8 - 9	11/16	49/64	718563
5/16 - 24	1/2 - 13	31/64	27/64	718557	5/8 - 11	7/8 - 9	1-1/8	49/64	718564
3/8 - 16	9/16 - 12	33/64	31/64	718558	3/4 - 10	1 - 8	25/32	7/8	718565
3/8 - 24	9/16 - 12	33/64	31/64	718559	1 - 8	1-3/8 - 12	1-1/4	1-19/64	718566
7/16 - 14	5/8 - 11	21/32	17/32	718560					

Metric Internal/Inch External

Steel - Black Oxide Finish (Nylon Pellet Locking Element)

Internal Thread 6H (2B)	External Thread	Length (Inch)	Tap Drill Size	Code	Internal Thread 6H (2B)	External Thread	Length (Inch)	Tap Drill Size	Code
M3 x 0.50	#12 - 24	1/4	#16	718567	M10 x 1.50	9/16 - 12	33/64	31/64	718572
M4 x 0.70	1/4 - 28	9/32	#3	718568	M12 x 1.75	3/4 - 10	21/32	21/32	718573
M5 x 0.80	5/16 - 18	5/16	F	718569	M14 x 2.00	7/8 - 9	11/16	49/64	718574
M6 x 1.00	3/8 - 16	13/32	5/16	718570	M16 x 2.00	1 - 8	25/32	7/8	718575
M8 x 1.25	1/2 - 13	31/64	27/64	718571	M11 x 1.50	5/8 - 11	19/32	17/32	718576