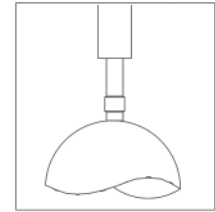
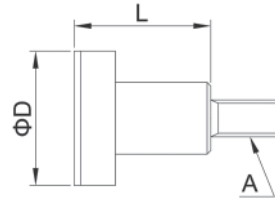




Indicator Flat Points

- Steel

D (mm)	L (mm)	A	Code
10	10	M2.5x0.45	282789
15	10	M2.5x0.45	282790
20	10	M2.5x0.45	282791
25	10	M2.5x0.45	282792
30	10	M2.5x0.45	282793
12.7	9.53	#4-48UNF	282794
9.53	9.53	#4-48UNF	282795

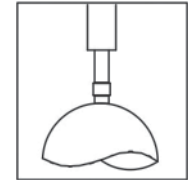
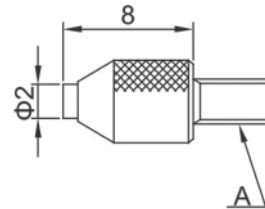


Indicator Flat Points



- Steel

A	Code
M2.5x0.45	282796

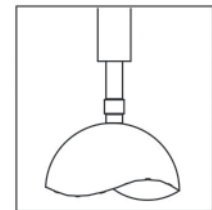
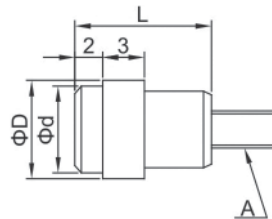


Indicator Flat Points



- Steel

L (mm)	A	D (mm)	d (mm)	Code
10	M2.5x0.45	7	6.4	282797
10	M2.5x0.45	9	8	282798



Indicator Flat Points



- Steel

L (mm)	A	D (mm)	d (mm)	Code
5	M2.5x0.45	5.2	4.3	282799
10	M2.5x0.45	7	6.5	282800
10	M2.5x0.45	10.5	9.5	282801
10	M2.5x0.45	17	15	282802

