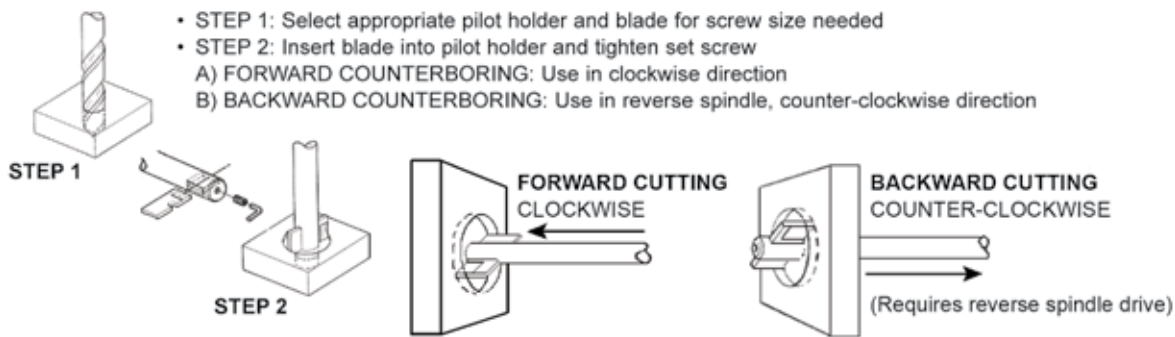


Cap Screw Counterbores Multil-Tool System

OPERATION FOR FORWARD AND BACKWARD APPLICATIONS



- Simple design for standard cap screws
- More chip clearance
- Used in confined areas
- Using the same pilot holder you can forward counterbore or backward counterbore and spotface

High Speed Blades

Forward Blades

Screw Size	Cutting Diameter (Inch)	Blade Thickness (Inch)	Code	Screw Size	Cutting Diameter (Inch)	Blade Thickness (Inch)	Code
No.10	21/64	1/16	311000	7/16	11/16	3/32	311004
1/4	13/32	1/16	311001	1/2	25/32	3/32	311005
5/16	1/2	3/32	311002	7/8	1-3/8	1/4	311006
3/8	19/32	3/32	311003	1	1-9/16	1/4	311007

Backward Blades

Screw Size	Cutting Diameter (Inch)	Blade Thickness (Inch)	Code	Screw Size	Cutting Diameter (Inch)	Blade Thickness (Inch)	Code
1/4	13/32	1/16	311008	5/8	1	3/16	311013
5/16	1/2	3/32	311009	3/4	1-3/16	3/16	311014
3/8	19/32	3/32	311010	7/8	1-3/8	1/4	311015
7/16	11/16	3/32	311011	1	1-9/16	1/4	311016
1/2	25/32	3/32	311012				

Holders

Screw Size	Pilot Diameter (Inch)	Shank Diameter (Inch)	Overall Length (Inch)	Code	Screw Size	Pilot Diameter (Inch)	Shank Diameter (Inch)	Overall Length (Inch)	Code
No.10	13/64	1/4	4	311017	1/2	17/32	1/2	5-3/4	311022
1/4	9/32	9/32	4	311018	5/8	21/32	5/8	7-1/2	311023
5/16	11/32	11/32	4-3/8	311019	3/4	13/16	3/4	7-1/2	311024
3/8	13/32	13/32	5	311020	7/8	15/16	3/4	8	311025
7/16	15/32	15/32	5-3/4	311021	1	1-1/16	3/4	8	311026

Set Screws

Description	Code
Set Screw for 311017, 311018	311027
Set Screw for 311019, 311020, 311021, 311022	311028
Set Screw for 311023, 311024	311029
Set Screw for 311025, 311026	311030