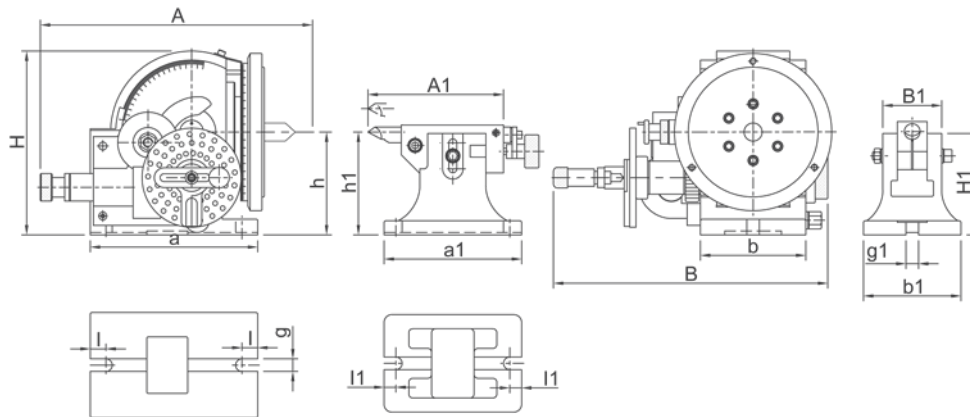
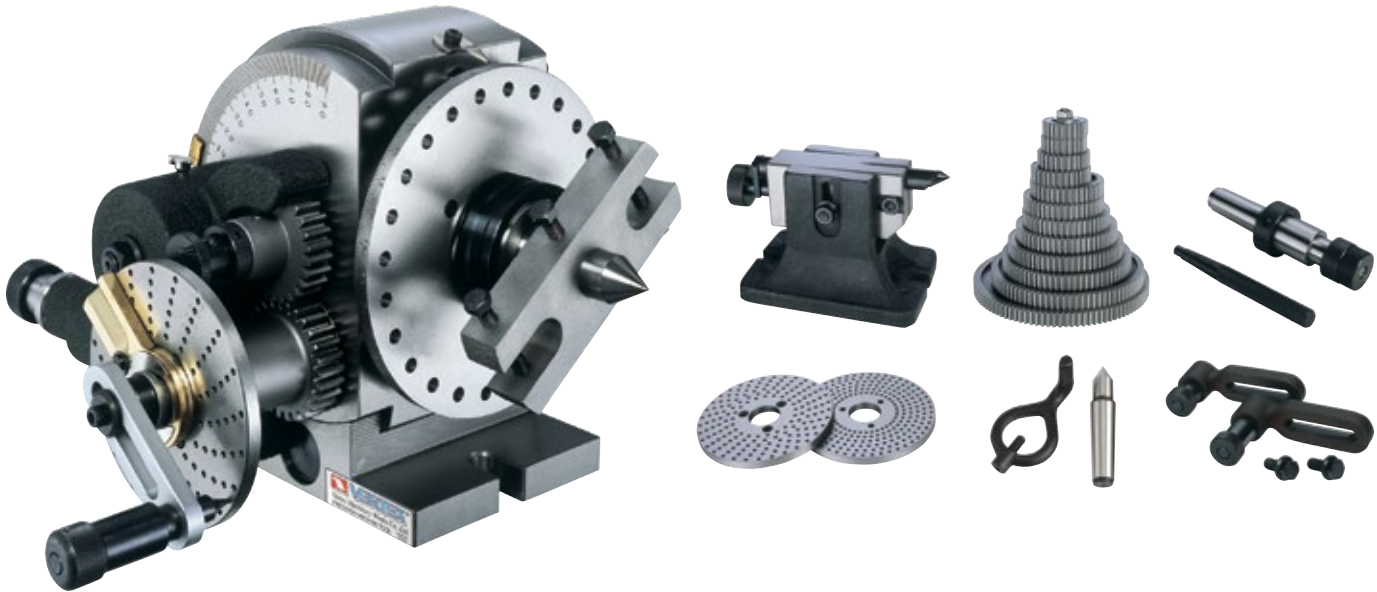


## Universal Dividing Head



### Tail Stock

Model	A1 (mm)	B1 (mm)	H1 (mm)	I1 (mm)	a1 (mm)	b1 (mm)	h1 (mm)	g1	Weight (kg)
BS-2	135-175	75	130	15	175	125	120-145	16	10

### Standard Accessories: Dividing Plate A, B, C. Number of Holes of Dividing Plate (Worm Gear Reduction Ratio 40:1)

Number of Holes	Plate A	15	16	17	18	19	20
	Plate B	21	23	27	29	31	33
	Plate C	37	39	41	43	47	49

- Can be used for either direct or indirect dividing
- Three additional indexing plates included to provide the ability of indirect dividing of all divisions from 2 to 50 and also most common divisions up to 380
- Hardened and ground spindle is rigidly held in a taper roller bearing
- Hardened and ground worm
- Swivel head can be locked on any angle from 10° below horizontal to 90° vertical - precision fitting to base allows smooth rotation
- Threaded spindle nose and 24 hole dividing plate with easy conversion to fast direct indexing on numbers 2, 3, 4, 6, 8, 12 and 24

A (mm)	B (mm)	H (mm)	I (mm)	a (mm)	b (mm)	g (mm)	h (mm)	Center Taper (mm)	Spindle Through Hole (mm)	Code
359	340	235	20	212	135	16	134	MT4	25	277075