



## Universal Lathe Chucks

Cast Iron – 2-Piece Jaws – 4-Jaw Self-Centering

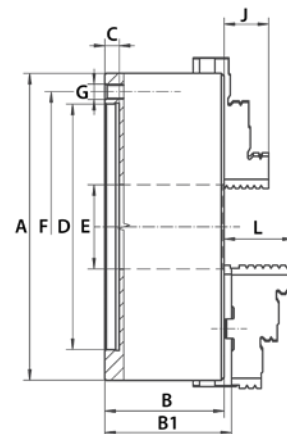
Plain Back – Series 3605

- Cast iron
- Plain back (Back plates required)
- Ground working surfaces

**Standard Accessories:**

- 1 set of hard top jaws
- 1 set of hard master jaws
- 1 wrench
- 1 hex key

See 322 for Clamping Ranges



A (Inch)	B (Inch)	BI (Inch)	C (Inch)	D H7 (Inch)	E (Inch)	F (Inch)	G	J (Inch)	L (Inch)	Weight (lbs)	Code
4.92	2.20	2.39	0.16	3.74	1.26	4.25	3 x M8	0.79	1.57	11.02	355164
6.30	2.54	2.73	0.16	4.92	1.65	5.51	6 x M10	1.26	1.69	22.05	355165
7.87	2.95	3.14	0.16	6.30	2.17	6.93	6 x M10	1.14	1.77	35.58	355166
9.84	3.35	3.50	0.20	7.87	2.99	8.82	6 x M12	1.34	2.09	63.93	355167
12.40	3.70	3.90	0.20	10.24	4.06	11.26	6 x M16	1.69	2.24	110.23	355168
15.75	4.13	4.48	0.20	12.99	5.35	14.25	6 x M16	2.17	2.64	187.39	355169
19.69	4.72	5.15	0.20	16.54	7.48	18.03	6 x M16	2.36	3.11	319.67	355170
24.80	5.31	5.76	0.28	21.46	9.92	23.07	6 x M16	2.76	3.43	551.16	355171

Steel – 2-Piece Jaws – 4-Jaw Self-Centering

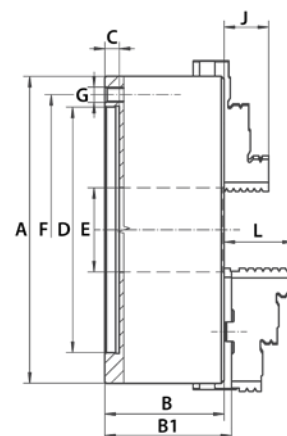
Plain Back – Series 3705

- Steel
- Plain back (Back plates required)
- Hardened and ground working surfaces
- Balanced scroll plate

**Standard Accessories:**

- 1 set of hard top jaws
- 1 set of hard master jaws
- 1 wrench
- 1 hex key

See 322 for Clamping Ranges



A (Inch)	B (Inch)	BI (Inch)	C (Inch)	D H7 (Inch)	E (Inch)	F (Inch)	G	J (Inch)	L (Inch)	Weight (lbs)	Code
6.30	2.68	2.87	0.16	4.92	1.65	5.51	6 x M10	1.26	1.69	22.05	355172
7.87	3.07	3.26	0.16	6.30	2.17	6.93	6 x M10	1.14	1.77	38.58	355173
9.84	3.50	3.65	0.20	7.87	2.99	8.82	6 x M12	1.34	2.09	63.93	355174
12.40	3.83	3.99	0.20	10.24	4.06	11.26	6 x M16	1.69	2.24	110.23	355175
15.75	4.29	4.60	0.20	12.99	5.35	14.25	6 x M16	2.17	2.64	187.39	355176
19.69	4.69	5.11	0.20	16.54	7.48	18.03	6 x M16	2.36	3.11	319.67	355177
24.80	5.08	5.52	0.28	21.46	9.92	23.07	6 x M16	2.76	3.43	551.16	355178