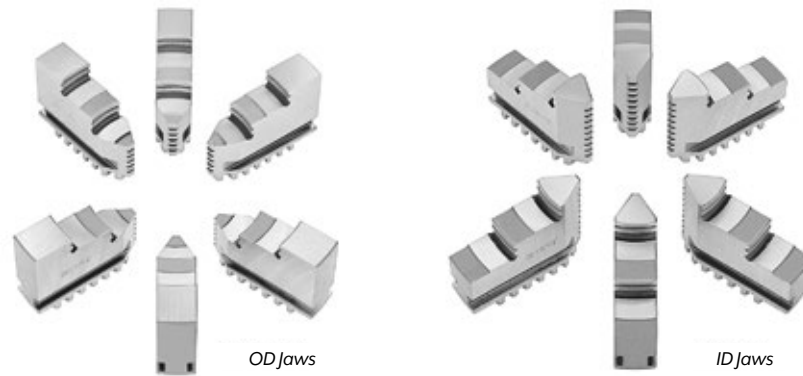


Lathe Chuck Accessories

For Bison Self-Centering Lathe Chucks

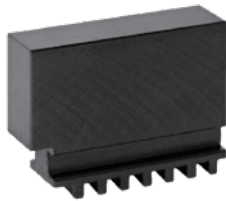


Hard Solid Outside & Inside Jaws



For Chuck Diameter (Inch)	Hard Solid Outside Jaws			Hard Solid Inside Jaws		
	For Series 3200 3-Piece Sets	For Series 3600 4-Piece Sets	For Series 3800 6-Piece Sets	For Series 3200 3-Piece Sets	For Series 3600 4-Piece Sets	For Series 3800 6-Piece Sets
	Code	Code	Code	Code	Code	Code
3	-	-	-	355716	-	-
4	355697	-	-	355717	-	-
5	355698	355704	-	355991	355724	-
6	355989	355705	355712	355992	355725	355732
8	355990	355706	355713	355718	355726	355733
10	355699	355707	355714	355719	355727	-
12	355700	355708	355715	355720	355728	355735
16	355701	-	-	355721	355729	-
20	355702	355710	-	355722	355730	-
25	-	355711	-	-	355731	-

Soft Solid Jaws



Hard Top Jaws



For Chuck Diameter (Inch)	For Series 3200 & 3500 3-Piece Sets	For Series 3600 4-Piece Sets	For Chuck Diameter (Inch)	For Series 3200 & 3500 3-Piece Sets	For Series 3600 4-Piece Sets	For Series 3800 6-Piece Sets
	Code	Code		Code	Code	Code
3	355736	-	5	355753	355759	-
4	355737	-	6	355754	355760	355767
5	355738	355745	8	355755	355761	355768
6	355993	355746	10	355756	355762	355769
8	355739	-	12	355757	355763	355770
10	355740	355748	16	355303	-	355771
12	355741	355749	20	355304	355765	355772
16	355742	355750	25	355305	355766	355773
20	-	355751				
25	355744	355752				