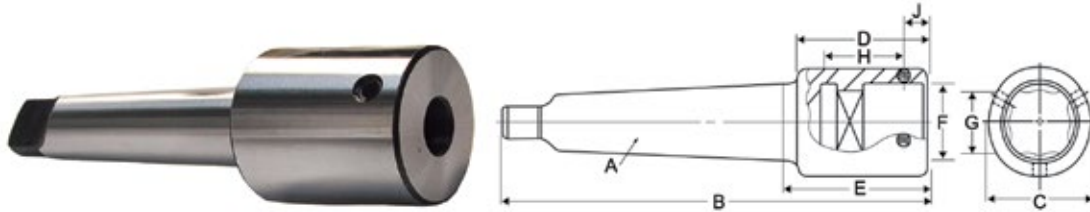


Tap Drivers

Heavy Duty – For Hand & Pipe Tap Sizes

Broached square in holder is approximately 0.030" larger than tap square dimension "G"



For Hand Tap Sizes

Tap Size (Inch)	A Morse Taper Shank	B Overall Length (Inch)	C Body Diameter (Inch)	D Body Length (Inch)	E Projection (Inch)	F Tap Shank (Inch)	G Tap Square (Inch)	H Depth Tap Enters Holder (Inch)	J Location of Set Screw (Inch)	Code
3/4	3	6	1-23/32	2-1/8	2-5/16	0.590	0.442	1-3/8	7/16	826037
3/4	4	7	1-23/32	2-1/8	2-3/8	0.590	0.442	1-3/8	7/16	826038
7/8	3	6	1-23/32	2-1/8	2-5/16	0.697	0.523	1-1/2	7/16	826039
7/8	4	7	1-23/32	2-1/8	2-3/8	0.697	0.523	1-1/2	7/16	826040
1	3	6	1-23/32	2-1/8	2-5/16	0.800	0.600	1-5/8	7/16	826041
1	4	7	1-23/32	2-1/8	2-3/8	0.800	0.600	1-5/8	7/16	826042
1-1/16 – 1-1/8	3	6	1-23/32	2-1/8	2-5/16	0.896	0.672	1-3/4	7/16	826043
1-1/16 – 1-1/8	4	7	1-23/32	2-1/8	2-3/8	0.896	0.672	1-3/4	7/16	826044
1-3/16 – 1-1/4	3	6-5/8	1-27/32	2-3/4	2-15/16	1.021	0.766	2-3/16	5/8	826045
1-3/16 – 1-1/4	4	7-5/8	1-27/32	2-3/4	3	1.021	0.766	2-3/16	5/8	826046
1-5/16 – 1-3/8	3	7-5/8	1-27/32	2-3/4	2-15/16	1.108	0.831	2-1/4	5/8	826047
1-5/16 – 1-3/8	4	9-1/8	1-27/32	2-3/4	3	1.108	0.831	2-1/4	5/8	826048
1-7/16 – 1-1/2	4	7-7/8	1-27/32	2-3/4	3	1.233	0.925	2-5/16	5/8	826049
1-7/16 – 1-1/2	5	9-1/8	2-19/32	3	3-1/4	1.233	0.925	2-5/16	5/8	826050
1-5/8	4	7-7/8	2-19/32	3	3-1/4	1.305	0.979	2-3/8	5/8	826051
1-5/8	5	9-1/8	2-19/32	3	3-1/4	1.305	0.979	2-3/8	5/8	826052
1-3/4	4	7-7/8	2-19/32	3	3-1/4	1.430	1.072	2-3/8	5/8	826053
1-3/4	5	9-1/8	2-19/32	3	3-1/4	1.430	1.072	2-3/8	5/8	826054
1-7/8	4	7-7/8	2-19/32	3	3-1/4	1.519	1.139	2-1/2	5/8	826055
1-7/8	5	9-1/8	2-19/32	3	3-1/4	1.519	1.139	2-1/2	5/8	826056
2	4	8	2-19/32	3-1/8	3-3/8	1.644	1.233	2-5/8	5/8	826057
2	5	9-5/8	2-23/32	3-1/2	3-3/4	1.644	1.233	2-5/8	3/4	826058
2-1/8	5	9-5/8	2-23/32	3-1/2	3-3/4	1.769	1.327	3	3/4	826059
2-1/4	5	10-3/16	2-31/32	4-1/16	4-5/16	1.894	1.420	3-1/8	7/8	826060
2-3/8	5	10-3/16	2-31/32	4-1/16	4-5/16	2.019	1.514	3-3/8	7/8	826061
2-1/2	5	10-1/2	3-11/32	4-3/8	4-5/8	2.100	1.575	3-1/2	1	826062
2-5/8	5	10-1/2	3-11/32	4-3/8	4-5/8	2.225	1.669	3-1/2	1	826063
2-3/4	5	10-1/2	3-11/32	4-3/8	4-5/8	2.350	1.762	3-5/8	1	826064
2-7/8	5	10-11/16	3-17/32	4-9/16	4-13/16	2.475	1.856	3-5/8	1	826065
3	5	10-11/16	3-17/32	4-9/16	4-13/16	2.543	1.907	3-3/4	1	826066

For Pipe Tap Sizes

Tap Size (Inch)	A Morse Taper Shank	B Overall Length (Inch)	C Body Diameter (Inch)	D Body Length (Inch)	E Projection (Inch)	F Tap Shank (Inch)	G Tap Square (Inch)	H Depth Tap Enters Holder (Inch)	J Location of Set Screw (Inch)	Code
3/4	3	6	1-23/32	2-1/8	2-5/16	0.9063	0.679	1-5/8	1/2	826067
3/4	4	7	1-23/32	2-1/8	2-3/8	0.9063	0.679	1-5/8	1/2	826068
1	3	6	1-23/32	2-1/8	2-5/16	1.1250	0.843	1-3/4	1/2	826069
1	4	7	1-23/32	2-1/8	2-3/8	1.1250	0.843	1-3/4	1/2	826070
1-1/4	4	7-9/16	2-7/32	2-11/16	2-15/16	1.3125	0.984	2	5/8	826071
1-1/4	5	8-13/16	2-7/32	2-11/16	2-15/16	1.3125	0.984	2	5/8	826072
1-1/2	4	7-9/16	2-7/32	2-11/16	2-15/16	1.5000	1.125	2-1/4	5/8	826073
1-1/2	5	8-13/16	2-7/32	2-11/16	2-15/16	1.5000	1.125	2-1/4	5/8	826074
1-3/4	4	7-7/8	2-19/32	3	3-1/4	1.6250	1.218	2-3/8	3/4	826075
1-3/4	5	9-1/8	2-19/32	3	3-1/4	1.6250	1.218	2-3/8	3/4	826076

TAPS, DIES & THREADING