



## Universal Lathe Chucks

Cast Iron – 2-Piece Jaws – 3-Jaw Self-Centering

Oil Country Chucks– Plain Back – Series 3295

- Cast iron
- With large through-hole designed for gripping long work pieces or pipes during machining
- Hardened and ground working surfaces
- High gripping force
- High accuracy
- Chucks can work individually or in pairs, mounted on opposite sides of the lathe spindle

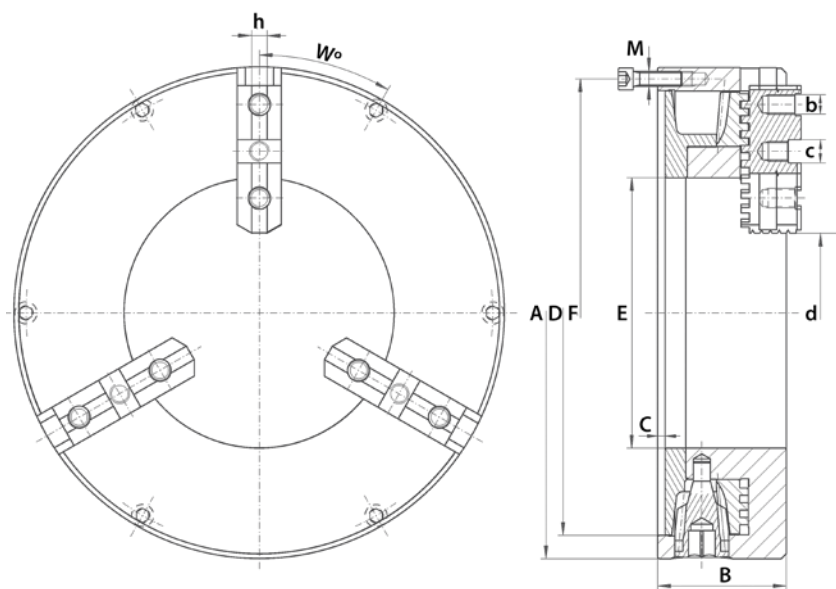
**Standard Accessories:**

- 1 set of soft top jaws
- 1 set of hard master jaws
- 1 wrench

See 322 for Clamping Ranges



LATHE CHUCKS & ACCESSORIES



A (Inch)	B (Inch)	C (Inch)	D (Inch)	E (Inch)	F (Inch)	M	W	a (Inch)	b	c (Inch)	h (Inch)	d Clamping Range (Inch)	Max RPM	Weight (lbs)	Code
15.75	4.13	0.24	14.25	8.66	15.00	6 x M12	30°	4.72	5/8-11	0.75	0.5	5.43 - 10.08	500	127.21	355065
20.00	4.72	0.31	18.19	12.60	18.96	6 x M16	30°	4.72	3/4-10	0.75	0.5	9.84 - 14.96	350	167.11	355066
25.98	5.31	0.55	22.83	15.98	24.41	6 x M16	30°	5.00	3/4-10	0.75	0.5	14.80 - 19.57	250	284.18	355067