

Universal Lathe Chucks

Cast Iron – 2-Piece Jaws – 3-Jaw Self-Centering



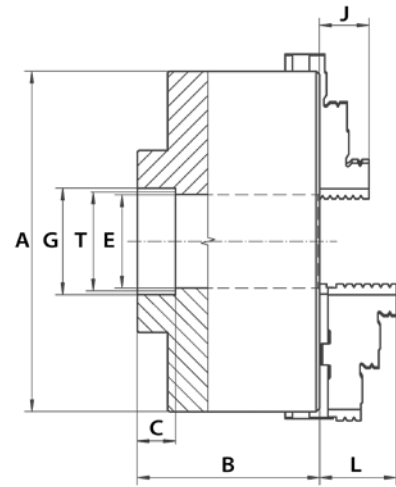
Threaded – Series 3285

- Cast iron
- Ground working surfaces

Standard Accessories:

- 1 set of hard top jaws
- 1 set of hard master jaws
- 1 wrench

See 322 for Clamping Ranges



| A (Inch) | B (Inch) | C (Inch) | E (Inch) | G (Inch) | J (Inch) | L (Inch) | T (Inch) | Weight (lbs) | Code |
|-------------|-------------|-------------|-------------|-------------|-------------|-------------|-------------|-----------------|--------|
| 4.92 | 3.74 | 0.500 | 1.26 | 1.015 | – | 1.57 | 1 - 10 | 12.0 | 355055 |
| 4.92 | 3.74 | 0.500 | 1.26 | 1.515 | – | 1.57 | 1-1/2 - 8 | 12.0 | 355056 |
| 6.30 | 4.13 | 0.500 | 1.65 | 1.515 | – | 1.69 | 1-1/2 - 8 | 23.0 | 355057 |
| 6.30 | 4.33 | 0.625 | 1.65 | 2.260 | – | 1.69 | 2-1/4 - 8 | 23.0 | 355058 |
| 7.87 | 4.53 | 0.500 | 2.17 | 1.515 | – | 1.77 | 1-1/2 - 8 | 45.0 | 355059 |
| 7.87 | 4.72 | 0.625 | 2.17 | 2.260 | – | 1.77 | 2-1/4 - 8 | 45.0 | 355060 |
| 7.87 | 4.92 | 0.750 | 2.17 | 2.385 | – | 1.77 | 2-3/8 - 6 | 45.0 | 355061 |
| 9.84 | 5.51 | 0.625 | 2.99 | 2.260 | – | 2.09 | 2-1/4 - 8 | 78.0 | 355062 |