



Universal Lathe Chucks

Cast Iron – 2-Piece Jaws – 3-Jaw Self-Centering

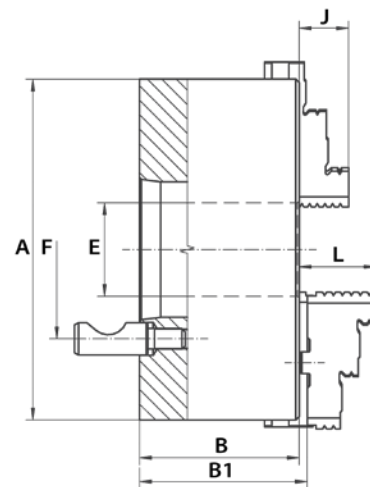
Type D – Series 3245

- Cast iron
- Direct mount
- Ground working surfaces

Standard Accessories:

- 1 set of hard top jaws
- 1 set of hard master jaws
- 1 wrench

See 322 for Clamping Ranges



LATHE CHUCKS & ACCESSORIES

A (Inch)	Taper Size	B (Inch)	B1 (Inch)	E (Inch)	F (Inch)	No. of Stud Bolts	J (Inch)	L (Inch)	Weight (lbs)	Code
4.92	4	2.76	2.94	1.26	3.25	3	0.79	1.57	11.02	355023
6.30	3	3.21	3.40	1.65	2.78	3	1.26	1.69	19.84	355024
6.30	4	3.21	3.40	1.65	3.25	3	1.26	1.69	19.84	355025
6.30	3	3.21	3.40	1.65	2.78	3	1.26	1.69	19.84	355026
7.87	4	3.58	3.77	2.03	3.25	3	1.14	1.77	41.89	355027
7.87	5	3.58	3.77	2.17	4.13	6	1.14	1.77	41.89	355028
7.87	6	3.58	3.77	2.17	5.25	6	1.14	1.77	41.89	355029
7.87	5	3.58	3.77	2.17	4.13	6	1.14	1.77	41.89	355030
9.84	6	4.07	4.22	2.99	5.25	6	1.34	2.09	70.55	355031
9.84	8	4.07	4.22	2.99	6.75	6	1.34	2.09	70.55	355032
12.40	6	4.63	4.83	4.06	5.25	6	1.69	2.24	112.44	355033
12.40	8	4.63	4.83	4.06	6.75	6	1.69	2.24	112.44	355034
12.40	11	4.92	5.12	4.06	9.25	6	1.69	2.24	112.44	355035
15.75	6	5.06	5.41	4.06	5.25	6	2.17	2.64	222.67	355036
15.75	8	5.06	5.41	5.35	6.75	6	2.17	2.64	222.67	355037
15.75	11	5.06	5.41	5.35	9.25	6	2.17	2.64	222.67	355038
19.69	8	5.75	6.17	5.35	6.75	6	2.36	3.11	330.69	355039
19.69	11	5.75	6.17	7.48	9.25	6	2.36	3.11	330.69	355040
24.80	11	6.50	6.94	7.48	9.25	6	2.75	3.43	604.07	355041