

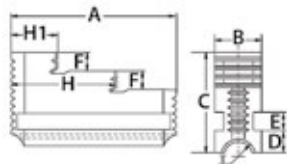
Independent Lathe Chucks & Accessories



Spare Jaws for PI Series

Hard jaws, supplied as supplement or as spares, must be ground on the chuck, otherwise centering accuracy does not conform the limits

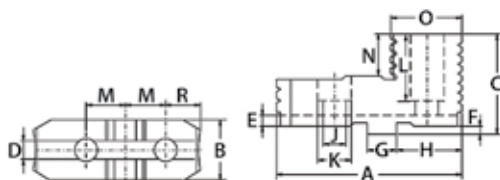
Hard Solid Reversible Jaws – 4-Piece Sets



LATHE CHUCKS & ACCESSORIES

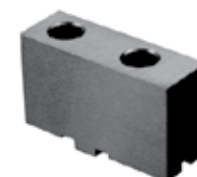
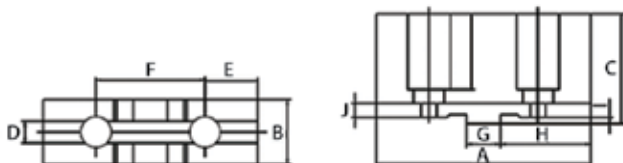
For Chuck Diameter (Inch)	A (Inch)	B (Inch)	C (Inch)	D (Inch)	E (Inch)	F (Inch)	H (Inch)	HI (Inch)	Thread	Weight (lbs)	Code
8	3.35	1.06	2.42	0.45	0.39	0.47	2.28	1.20	24 x 4 sq.	1.54	411020
10	3.62	1.06	2.42	0.45	0.39	0.47	2.58	1.20	24 x 4 sq.	1.65	411022
12	4.37	1.57	3.01	0.38	0.47	0.71	2.64	1.06	Tr32 x 6	3.31	411024
16	5.08	1.57	3.01	0.38	0.47	0.71	3.09	1.28	Tr32 x 6	3.97	411026
20	6.00	2.05	3.68	0.46	0.59	0.87	3.66	1.39	Tr36 x 6	7.50	411028
25	6.97	2.05	3.96	0.62	0.71	0.98	4.29	1.77	Tr40 x 6	8.80	411030
32	7.95	2.76	4.51	0.62	0.79	0.98	4.80	1.73	Tr40 x 8	18.00	411032

Hard Top Jaws – 4-Piece Sets



For Chuck Diameter (Inch)	B (Inch)	C (Inch)	D (Inch)	E (Inch)	F (Inch)	G (Inch)	H (Inch)	J (Inch)	K (Inch)	M (Inch)	N (Inch)	A OAL (Inch)	O (Inch)	P (Inch)	Weight (lbs)	Code
8	1.34	1.71	0.31	0.16	0.13	0.50	1.39	0.43	0.71	0.88	0.37	3.23	0.87	2.09	1.65	411048
10	1.34	2.03	0.50	0.16	0.13	0.75	1.57	0.55	0.79	1.03	0.47	3.80	0.98	2.44	2.25	411050
12	1.65	2.17	0.50	0.16	0.13	0.75	1.89	0.55	0.79	1.25	0.51	4.43	1.06	2.78	3.40	411052
16	1.65	2.54	0.50	0.16	0.25	0.75	2.26	0.71	1.02	1.50	0.53	5.08	1.04	3.11	4.50	411054
20	2.13	2.93	0.50	0.16	0.25	0.75	2.28	0.89	1.30	1.50	0.71	5.35	1.48	3.43	7.00	411056
25	2.13	3.23	0.50	0.16	0.25	0.75	2.28	0.89	1.30	1.50	0.83	5.35	1.48	3.43	7.60	411058
32	2.83	3.46	0.50	0.16	0.25	0.75	2.28	0.89	1.30	1.50	0.94	5.35	1.57	3.50	11.00	411060

Soft Top Jaws – 1-Piece



For Chuck Diameter (Inch)	A (Inch)	B (2) (Inch)	C (Inch)	D (Inch)	E (Inch)	F (Inch)	G (Inch)	H (Inch)	I (Inch)	J (Inch)	M Thread	Weight (lbs)	Code
8	3.54	1.06	1.71	0.31	0.95	1.75	0.50	1.57	0.13	0.28	3/8-16	1.43	411034
12	4.72	1.57	2.16	0.50	1.21	2.50	0.75	2.09	0.25	0.28	1/2-13	3.53	411038
25 & 32	6.30	2.05	3.29	0.50	1.35	3.00	0.75	2.48	0.25	0.41	3/4-10	9.26	411044