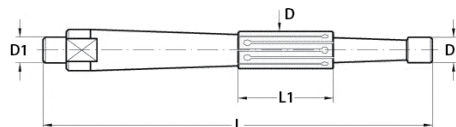


Expanding Mandrels



Model	D Range Inch (mm)	L Length Inch (mm)	D1 Diameter Inch (mm)	L1 Sleeve Length Inch (mm)	Complete	Sleeve Only
					Code	Code
LM-1	0.51-0.75 (13-19)	6.5 (165)	0.43 (11)	1.57 (40)	165101	165201
LM-2	0.75-1.00 (19-25)	7.7 (196)	0.50 (13)	2.36 (60)	165102	165202
LM-3	1.00-1.30 (25-33)	10.0 (257)	0.67 (17)	3.54 (90)	165103	165203
LM-4	1.30-1.66 (33-42)	11.7 (297)	0.91 (23)	4.72 (120)	165104	165204
LM-5	1.66-2.05 (42-52)	13.3 (338)	1.18 (30)	5.12 (130)	165105	165205
LM-6	2.05-2.56 (52-65)	15.4 (392)	1.50 (38)	5.90 (150)	165106	165206
LM-7	2.56-3.07 (65-78)	15.4 (392)	1.50 (38)	5.90 (150)	165107	165207
LM-8	3.07-3.55 (78-90)	15.4 (392)	1.50 (38)	5.90 (150)	165108	165208

Model	Set Range (Inch)	Code
SET: LM-16	0.51 to 2.56 (Model LM-1 to LM-6)	165116

Revolving Tail Stock Turrets



- Compact, accurate and well-made, these revolving tailstock turrets convert your engine or bench lathe into a screw machine
- Available in two sizes, have six holes each for holding six tools
- Trigger type handle is conveniently located which enables instant changing from one tool to another
- Supplied with Morse taper shank as indicated below

Turret Diameter (Inch)	Hole Size (Inch)	Morse Taper	Weight (lbs)	Code
2-1/2	5/8	2	4	303500
5	1	3	12	303501
5	1	4	12	303502
5	1	1" SS	12	303503

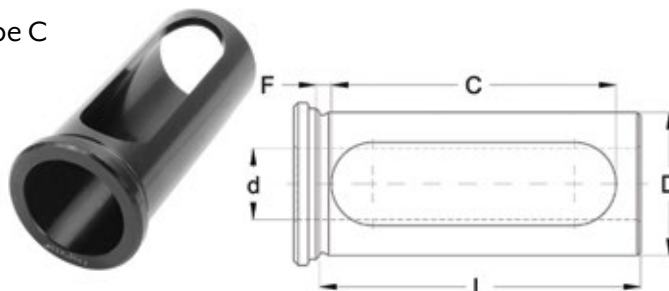
Tool Holder Bushings

CNC Bushings – Black Oxide Finish – Types C, CV, B, DD, J & Z

- For use on all NC and CNC turning machines to adapt a wide variety of boring bars, drills, reamers and other round shank type tools
- Heat treated and precision ground

Type C

- C bushings have long slots for clamping directly on the tool for positive alignment of the cutting edge of the tool



D Outside Diameter (Inch)	d Inside Diameter (Inch)	L Length Under Head (Inch)	C Slot Length (Inch)	F (Inch)	Code
3/4	3/8	2	1-1/2	0.1693	310732
3/4	1/2	2	1-1/2	0.1693	310733
2 Piece Set – 3/8" to 1/2"					300850
1	3/8	2-3/4	2-3/8	0.1319	310534
1	1/2	2-3/4	2-3/8	0.1319	310536
1	5/8	2-3/4	2-3/8	0.1319	310538

D Outside Diameter (Inch)	d Inside Diameter (Inch)	L Length Under Head (Inch)	C Slot Length (Inch)	F (Inch)	Code
1	3/4	2-3/4	2-3/8	0.1319	310540
4 Piece Set – 3/8" to 3/4"					300851
1-1/4	3/8	3-1/4	2-3/4	0.1496	310544
1-1/4	1/2	3-1/4	2-3/4	0.1496	310545
1-1/4	5/8	3-1/4	2-3/4	0.1496	310547
1-1/4	3/4	3-1/4	2-3/4	0.1496	310549