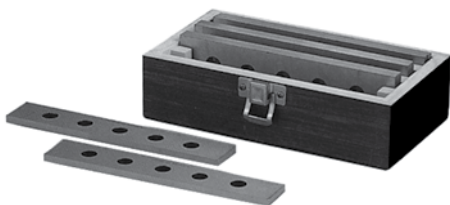


## Parallels

### Utility, Ultra Thin & Value Parallel Sets

#### Utility Parallel Sets



3/16" Thick - 4 Pairs		1/2" Thick - 4 Pairs	
Dimensions (Inch)	Hole Size (Inch)	Dimensions (Inch)	Hole Size (Inch)
3/16 x 1 x 6	5/16	1/2 x 1 x 6	5/16
3/16 x 1-1/4 x 6	3/8	1/2 x 1-1/4 x 6	3/8
3/16 x 1-1/2 x 6	7/16	1/2 x 1-1/2 x 6	7/16
3/16 x 1-3/4 x 6	1/2	1/2 x 1-3/4 x 6	1/2

Description	Code
3/16" Thick 4 Pairs	427003
1/2" Thick 4 Pairs	427005



#### Ultra Thin Parallel Set

- Ultra thin parallels are 1/32" thick, 6" long, and range in height from 1/2" to 1-11/16" (in 1/16" increments)
- ±0.0001" in parallelism
- Paired in height to ±0.0001"
- Height matched to within ±0.001"

Description	Code
1/32" Thick 20 Pair Set	425490



#### Value Set

- Hardened steel, 6" in length by 1/8" thick.
- Heights: 1/2", 5/8", 3/4", 7/8", 1", 1-1/8", 1-1/4", 1-3/8", 1-1/2", 1-5/8"
- Parallel within 0.0008" each pair (±0.0004")
- Height matched within ±0.001" each pair

Description	Code
1/8" Thick 10 Pair Set	425491



#### Set

- Set in custom fitted plastic box with carrying handle
- Hardened steel, 6" in length by 1/4" thick
- Heights: 3/4", 7/8", 1", 1-1/8", 1-1/4", 1-3/8", 1-1/2", 1-5/8", 1-3/4"
- Parallel within 0.0005" each pair. Height matched within ±0.001" each pair

Description	Code
1/4" Thick 9 Pair Set	425492