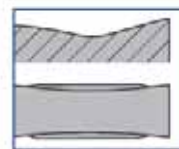
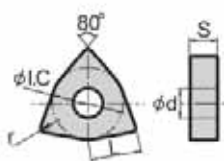


Turning Inserts

WNMG EF for Finishing Stainless Steel



NEGATIVE TRIGON



YBG202

| ANSI | ISO | L (Inch) | $\phi I.C.$ (Inch) | S (Inch) | ϕd (Inch) | r (Inch) | Code |
|------------|---------------|----------|--------------------|----------|-----------------|----------|--------|
| WNMG331-EF | WNMG060404-EF | 0.256 | 0.375 | 0.187 | 0.150 | 0.016 | 575945 |
| WNMG332-EF | WNMG060408-EF | 0.256 | 0.375 | 0.187 | 0.150 | 0.031 | 575947 |
| WNMG431-EF | WNMG080404-EF | 0.343 | 0.500 | 0.187 | 0.150 | 0.016 | 575950 |
| WNMG432-EF | WNMG080408-EF | 0.343 | 0.500 | 0.187 | 0.150 | 0.031 | 575998 |

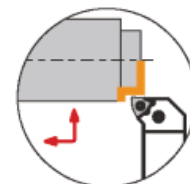
YBG203

| ANSI | ISO | L (Inch) | $\phi I.C.$ (Inch) | S (Inch) | ϕd (Inch) | r (Inch) | Code |
|------------|---------------|----------|--------------------|----------|-----------------|----------|--------|
| WNMG331-EF | WNMG060404-EF | 0.256 | 0.375 | 0.187 | 0.150 | 0.016 | 575941 |
| WNMG332-EF | WNMG060408-EF | 0.256 | 0.375 | 0.187 | 0.150 | 0.031 | 575943 |
| WNMG431-EF | WNMG080404-EF | 0.343 | 0.500 | 0.187 | 0.150 | 0.016 | 575948 |
| WNMG432-EF | WNMG080408-EF | 0.343 | 0.500 | 0.187 | 0.150 | 0.031 | 575996 |

YBG302

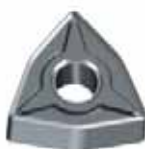
| ANSI | ISO | L (Inch) | $\phi I.C.$ (Inch) | S (Inch) | ϕd (Inch) | r (Inch) | Code |
|------------|---------------|----------|--------------------|----------|-----------------|----------|--------|
| WNMG431-EF | WNMG080404-EF | 0.343 | 0.500 | 0.187 | 0.150 | 0.016 | 575949 |
| WNMG432-EF | WNMG080408-EF | 0.343 | 0.500 | 0.187 | 0.150 | 0.031 | 575951 |

To be used with holders: PWLNR/L; MWLNR/L

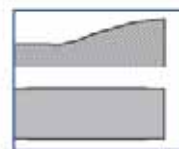
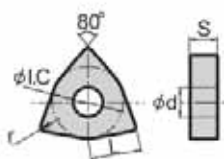


EXAMPLE: PWLNR

WNMG EM for Medium Machining of Stainless Steel



NEGATIVE TRIGON



YBG202

| ANSI | ISO | L (Inch) | $\phi I.C.$ (Inch) | S (Inch) | ϕd (Inch) | r (Inch) | Code |
|------------|---------------|----------|--------------------|----------|-----------------|----------|--------|
| WNMG431-EM | WNMG080404-EM | 0.343 | 0.500 | 0.187 | 0.150 | 0.016 | 576005 |
| WNMG432-EM | WNMG080408-EM | 0.343 | 0.500 | 0.187 | 0.150 | 0.031 | 576000 |