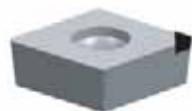
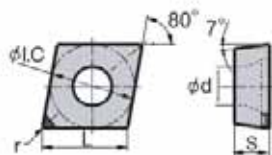


Turning Inserts

CCGW PCBN and PCD



POSITIVE 80° RHOMBIC



Coated Grades - PCBN

YCB011

ANSI	ISO	L (Inch)	ØI.C. (Inch)	S (Inch)	Ød (Inch)	r (Inch)	Code
CCGW-2(1.5)1	CCGW-060204	0.252	0.250	0.940	0.110	0.016	573122
CCGW-2(1.5)2	CCGW-060208	0.252	0.250	0.940	0.110	0.031	573128
CCGW-3(2.5)1	CCGW-09T304	0.382	0.375	0.156	0.173	0.016	573132
CCGW-3(2.5)2	CCGW-09T308	0.382	0.375	0.156	0.173	0.031	573138
CCGW-432	CCGW-120408	0.508	0.500	0.186	0.220	0.031	573142

YCB012

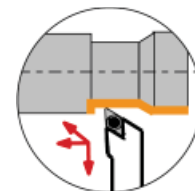
ANSI	ISO	L (Inch)	ØI.C. (Inch)	S (Inch)	Ød (Inch)	r (Inch)	Code
CCGW-2(1.5)1	CCGW-060204	0.252	0.250	0.940	0.110	0.016	573120
CCGW-2(1.5)2	CCGW-060208	0.252	0.250	0.940	0.110	0.031	573126
CCGW-3(2.5)1	CCGW-09T304	0.382	0.375	0.156	0.173	0.016	573130
CCGW-3(2.5)2	CCGW-09T308	0.382	0.375	0.156	0.173	0.031	573136

Coated Grade - PCD

YCD011

ANSI	ISO	L (Inch)	ØI.C. (Inch)	S (Inch)	Ød (Inch)	r (Inch)	Code
CCGW-2(1.5)1	CCGW-060204	0.252	0.250	0.940	0.110	0.016	573124
CCGW-3(2.5)1	CCGW-09T304	0.382	0.375	0.156	0.173	0.016	573134
CCGW-3(2.5)2	CCGW-09T308	0.382	0.375	0.156	0.173	0.031	573140

To be used with holders: SDACR/L; SDJCR/L; SDNCN; S__-SDQCR/L; S__-SDUCR/L; S__-SDZCR/L



EXAMPLE: SDJCR