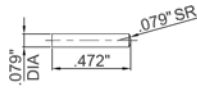


Electronic Caliper

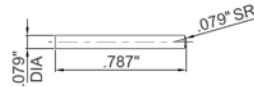
Interchangeable Points



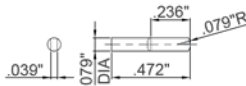
Short spherical/flat points



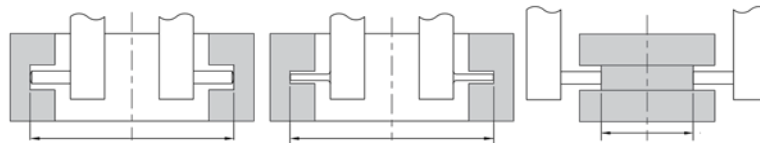
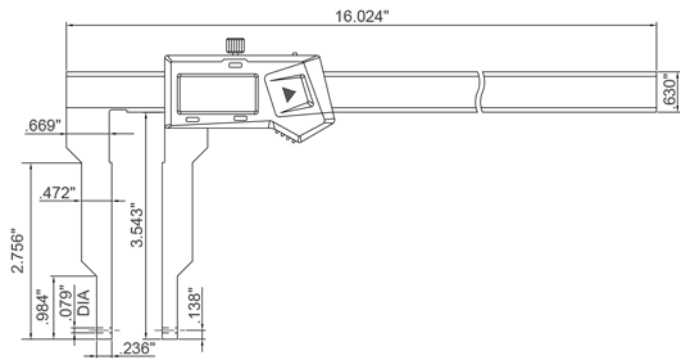
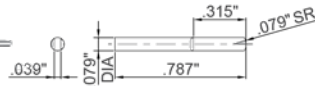
Long spherical/flat points



Short spherical blade points



Long spherical blade points



Spherical points for groove (inside hole) measurement

Spherical blade points for narrow groove (inside hole) measurement

Flat points for external groove measurement

- Supplied with 4 pairs of points and a zero setting block for external measurement
- Resolution: 0.0005"/0.01mm
- Buttons: on/off, set, inch/mm, preset (+, -)
- Auto power off, move unit to turn on
- Battery CR2032
- Stainless steel
- Data output
- Supplied in fitted storage case

OPTIONAL ACCESSORIES: SPC cable, Points, and Depth Stops

Points	Range (Inch/mm)	Accuracy (Inch)	Application	INSIZE No.	Code
Short spherical/flat	1-12.7/24-324 (Internal) 0-11.3/0-288 (External)	±0.0015	Spherical points for grooves inside small holes, flat points for external grooves	1124-300A	816619
Long spherical/flat	1.5-13.3/40-340 (Internal) 0-10.7/0-272 (External)	±0.0015	Spherical points for grooves inside large holes, flat points for external grooves		
Short spherical/blade	1-12.7/24-324 (Internal) 0-11.3/0-288 (External)	±0.0015	For narrow grooves inside small holes		
Long spherical/blade	1.5-13.3/40-340 (Internal) 0-10.7/0-272 (External)	±0.0015	For narrow grooves inside large holes		