

Miniature Lathe Chucks

Steel Body - 3-Jaw Self-Centering Chucks

- Reversible jaws
- Special compact construction to achieve very small turned diameter
- Suitable for EMCO and UNIMAT 3 lathes with threaded spindle



Series 3286

Mounting	Chuck Diameter (Inch)	Weight with Wrench (lbs)	Code
M14 x 1 Thread	2	0.98	355302

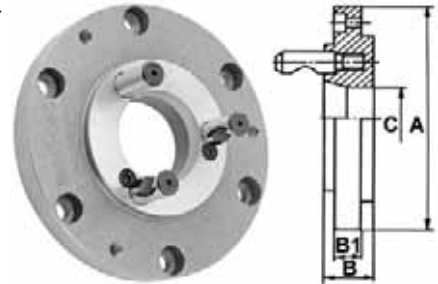
Lathe Chuck Accessories



Back Plates - Cast-Iron - for Bison Lathe Chucks

Camlock Type - Series 8240 - Fully Machined

Series 8240 - Fully machined adapters for BISON plain back, self-centering chucks – designed for direct mounting on camlock spindle noses



For Chuck Diameter (Inch)	Taper Size	Stud Diameter (Inch)	No. of Studs	C Diameter (Inch)	A Diameter (Inch)	B (Inch)	B1 (Inch)	Weight (lbs)	Code
5	D1-3	9/16	3	2.02	4.94	1.02	0.57	5.3	355565
5	D1-4	5/8	3	2.40	4.94	1.02	0.87	5.3	355566
6-1/4	D1-3	9/16	3	2.02	6.32	1.06	0.71	9.5	355567
6-1/4	D1-4	5/8	3	2.40	6.32	1.06	0.71	9.5	355568
6-1/4	D1-5	3/4	6	3.13	6.32	1.18	1.00	9.5	355569
6-1/4	D1-6	7/8	6	4.06	6.32	1.44	1.32	9.5	355570
8	D1-3	9/16	3	2.02	7.89	1.06	0.71	15.4	355571
8	D1-4	5/8	3	2.40	7.89	1.06	0.71	15.4	355572
8	D1-5	3/4	6	3.13	7.89	1.18	0.71	15.4	355573
8	D1-6	7/8	6	4.06	7.89	1.44	1.26	15.4	355574
10	D1-5	3/4	6	3.13	9.86	1.18	0.87	24.3	355575
10	D1-6	7/8	6	4.06	9.86	1.44	0.87	24.3	355576
10	D1-8	1	6	5.35	9.86	1.54	1.36	39.7	355577
12-1/2	D1-6	7/8	6	4.06	12.42	1.56	0.94	39.7	355578
12-1/2	D1-8	1	6	5.35	12.42	1.65	0.94	39.7	355579
12-1/2	D1-11	1-3/16	6	7.59	12.42	1.85	1.36	39.7	355580
15-3/4	D1-6	7/8	6	4.06	15.77	1.44	1.10	79.0	355581
15-3/4	D1-8	1	6	5.35	15.77	1.54	1.10	79.0	355582
15-3/4	D1-11	1-3/16	6	7.59	15.77	1.85	1.10	79.0	355583
20	D1-8	1	6	5.35	19.70	1.54	1.14	132.0	355584
20	D1-11	1-3/16	6	7.59	19.70	1.85	1.14	132.0	355585
25	D1-8	1	6	5.35	24.82	1.54	1.14	232.0	355586
25	D1-11	1-3/16	6	7.59	24.82	1.85	1.14	232.0	355587

Number of camlock studs depends on spindle size