



## Independent Lathe Chucks

Cast Iron & Steel – Solid Jaws – 4-Jaw Independent (continued)

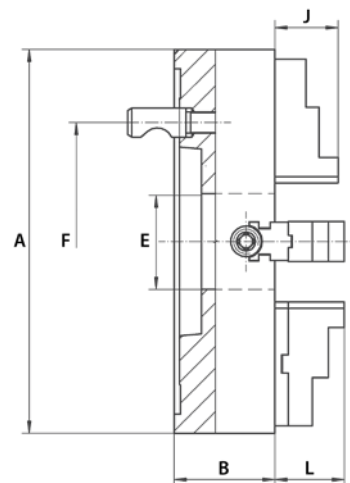
### Type D – Series 4344

- Cast iron
- Chucks 10" diameter and larger have additional T-slots

**Standard Accessories:**

- 1 set of solid reversible jaws
- 1 wrench

See 335 for Clamping Ranges

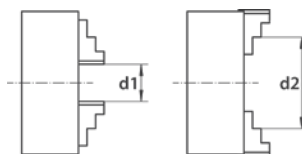


LATHE CHUCKS & ACCESSORIES

A (Inch)	Taper Size	B (Inch)	E (Inch)	F (Inch)	No. of Stud Bolts	J (Inch)	L (Inch)	Weight (lbs)	Code
7.87	3	3.15	1.97	2.78	3	1.59	1.83	36.38	355228
7.87	4	3.15	1.97	3.25	3	1.59	1.83	36.38	355229
7.87	5	3.15	1.97	4.13	6	1.59	1.83	36.38	355230
9.84	4	3.35	2.36	3.25	3	1.59	2.38	60.63	355231
9.84	5	3.35	2.56	4.13	6	1.59	2.38	60.63	355232
9.84	6	3.35	2.56	5.25	6	1.59	2.38	60.63	355233
12.40	6	3.74	3.15	5.25	6	1.96	2.40	87.08	355234
12.40	8	3.74	3.15	6.75	6	1.96	2.40	87.08	355235
15.75	6	4.13	3.94	5.25	6	1.96	2.85	132.28	355236
15.75	8	4.13	3.94	6.75	6	1.96	2.85	132.28	355237
15.75	11	4.13	3.94	9.25	6	1.96	2.85	132.28	355238
19.69	8	4.72	4.92	6.75	6	2.35	3.85	210.54	355239
19.69	11	4.72	4.92	9.25	6	2.35	3.85	210.54	355240
24.80	11	5.51	6.30	9.25	6	2.35	3.85	363.76	355241

### Clamping Ranges for 4-jaw Independent Chucks

- Do not exceed the maximum allowable clamping ranges



#### 4-Jaw Independent Chucks – Solid Reversible Jaws – Series 43\*\*

Chuck Diameter (Inch)	d1 (Inch)	d2 (Inch)	Maximum Swing Diameter (Inch)
3-1/2	0.12	3.35	3.98
4	0.12	0.39	4.57
5	0.31	4.92	5.91
6	0.31	6.30	7.28
8	0.39	7.87	9.25
10	0.39	9.84	11.60
12	0.59	12.40	14.50
16	0.79	15.70	18.30
20	1.77	19.70	22.40
25	1.97	24.80	28.30