

## Independent Lathe Chucks

Cast Iron & Steel – Solid Jaws – 4-Jaw Independent



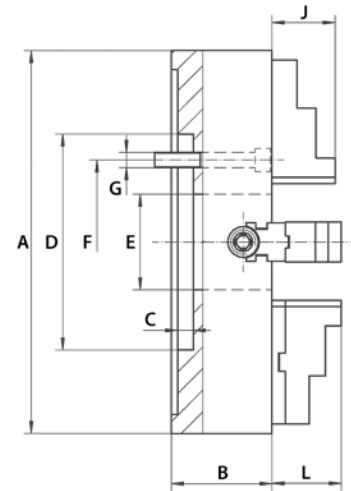
### Plain Back – Series 4304

- Cast iron
- Plain back (Back plates required)
- Chucks 10" diameter and larger have additional T-slots

**Standard Accessories:**

- 1 set of solid reversible jaws
- 1 wrench

See 335 for Clamping Ranges



A (Inch)	B (Inch)	C (Inch)	D (Inch)	E (Inch)	F (Inch)	G	J (Inch)	L (Inch)	Weight (lbs)	Code
7.87	3.15	0.20	4.33	1.97	3.24	4 x M10	1.59	1.83	30.86	355209
9.84	3.35	0.28	5.91	2.56	4.13	4 x M12	1.59	2.38	55.12	355210
12.40	3.74	0.28	6.89	3.15	5.25	4 x M16	1.96	2.40	85.98	355211
15.75	4.13	0.39	7.87	3.94	6.75	4 x M16	1.96	2.85	134.48	355212
19.69	4.72	0.47	10.63	4.92	9.25	4 x M20	2.35	3.85	231.49	355213
24.80	5.51	0.47	10.63	6.30	9.25	4 x M20	2.35	3.85	359.35	355214

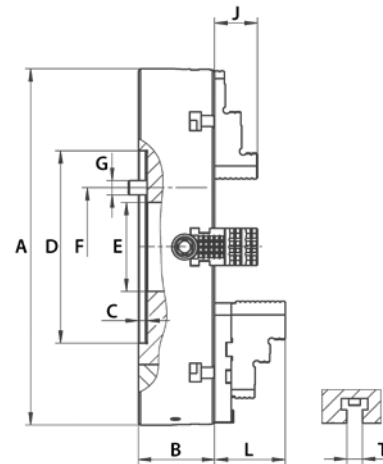
### Plain Back – Series 4306

- Steel
- Plain back (Back plates required)
- Chucks 10" diameter and larger have additional T-slots

**Standard Accessories:**

- 1 set of solid reversible jaws
- 1 wrench

See 335 for Clamping Ranges



A (Inch)	B (Inch)	C (Inch)	D (Inch)	E (Inch)	F (Inch)	G	J (Inch)	Weight (lbs)	Code
3.39	1.57	0.20	2.44	0.98	2.83	4 x M6	0.67	4.19	355206
5.12	1.69	0.10	2.75	1.02	2.13	4 x M8	0.79	10.58	355207
6.14	1.69	0.10	3.25	1.65	2.75	4 x M10	0.79	14.55	355208