



Combination Universal/Independent Lathe Chucks

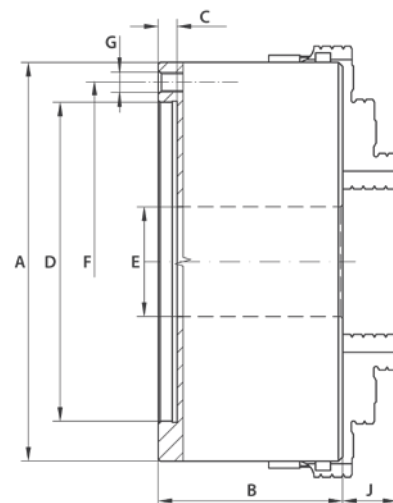
Cast Iron & Steel – Solid Jaws – 4-Jaw Self-Centering (Wescott)

Plain Back – Series 4605 / Front Mount – Series 4805

- Cast iron/Steel
- Plain back (Back plates required) or front mount
- Individually adjustable jaws
- Self-centering jaw clamping

Standard Accessories:

- 1 set of solid reversible jaws
- 1 wrench
- 1 hex key

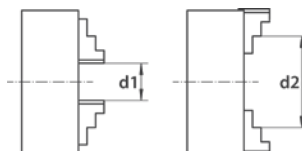


See 333 for Clamping Ranges

A (Inch)	B (Inch)	C (Inch)	D (Inch)	E (Inch)	F (Inch)	G	J (Inch)	Cast Iron Plain Back Series 4605		Steel Front Mount Series 4805	
								Weight (lbs)	Code	Weight (lbs)	Code
7.87	3.78	0.20	6.30	2.17	6.93	6 x M10	1.22	41.4	355190	43	355196
9.84	4.02	0.24	7.87	2.99	8.82	6 x M12	1.30	65	355191	68.3	355197
12.40	4.61	0.24	10.24	4.06	11.26	6 x M16	1.63	120	355192	124	355198
15.75	4.84	0.24	12.99	5.35	14.25	6 x M16	2.32	194	355193	198	355199
19.69	5.71	0.31	16.54	7.48	18.03	6 x M16	2.40	330	355194	342	355200
24.80	6.30	0.39	21.46	9.92	23.07	6 x M16	2.83	551	355195	573	355201

Clamping Ranges for 3-Jaw & 4-Jaw Combination Chucks

- Do not exceed the maximum allowable clamping ranges



3-Jaw & 4-Jaw Combination Chucks – Solid Reversible Jaws – Series 4505, 4605, 4705, 4805			
Chuck Diameter (Inch)	d1 (Inch)	d2 (Inch)	Maximum Swing Diameter (Inch)
8	0.16	7.87	9.45
10	0.20	9.84	11.80
12	0.39	12.40	14.60
16	0.59	15.70	18.50
20	0.79	19.70	22.60
25	1.18	24.80	28.50