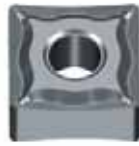
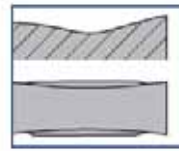
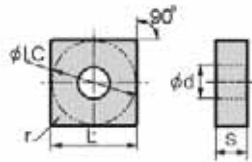


Turning Inserts SNMG EF for Finishing Stainless Steel



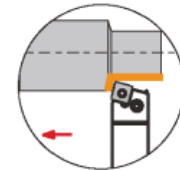
NEGATIVE SQUARE



YBG203

ANSI	ISO	L (Inch)	ØI.C. (Inch)	S (Inch)	Ød (Inch)	r (Inch)	Code
SNMG321-EF	SNMG090304-EF	0.382	0.375	0.125	0.150	0.016	573013
SNMG322-EF	SNMG090308-EF	0.382	0.375	0.125	0.150	0.031	573015
SNMG431-EF	SNMG120404-EF	0.508	0.500	0.187	0.203	0.016	573017
SNMG432-EF	SNMG120408-EF	0.508	0.500	0.187	0.203	0.031	573019
SNMG433-EF	SNMG120412-EF	0.508	0.500	0.187	0.203	0.047	573021

To be used with holders: PSBNR/L; PSDNN; PSKNR/L; PSSNR/L; MSBNR/L; MSRNR/L; MSKNR/L; MSDNN; S_ _-PSKNR/L



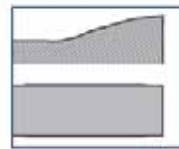
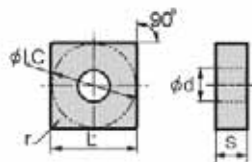
EXAMPLE: PSBNR



SNMG EM for Medium Machining of Stainless Steel



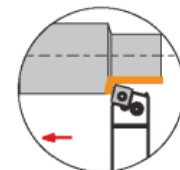
NEGATIVE SQUARE



YBG203

ANSI	ISO	L (Inch)	ØI.C. (Inch)	S (Inch)	Ød (Inch)	r (Inch)	Code
SNMG321-EM	SNMG090304-EM	0.382	0.375	0.125	0.150	0.016	573023
SNMG322-EM	SNMG090308-EM	0.382	0.375	0.125	0.150	0.031	573025
SNMG431-EM	SNMG120404-EM	0.508	0.500	0.187	0.203	0.016	573027
SNMG432-EM	SNMG120408-EM	0.508	0.500	0.187	0.203	0.031	573029
SNMG433-EM	SNMG120412-EM	0.508	0.500	0.187	0.203	0.047	573031

To be used with holders: PSBNR/L; PSDNN; PSKNR/L; PSSNR/L; MSBNR/L; MSRNR/L; MSKNR/L; MSDNN; S_ _-PSKNR/L



EXAMPLE: PSBNR