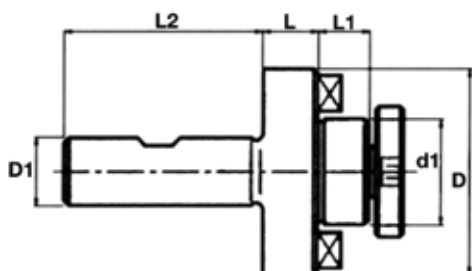


Shell Mill Arbors

Straight Shanks



Shank Diameter (Inch)	d1 (Inch)	D (Inch)	L (Inch)	L1 (Inch)	L2 (Inch)	Code
3/4	0.75	1.75	0.703	0.67	1.75	827145
1	1.00	2.12	0.714	0.67	2.25	827146
1	1.25	2.50	0.845	0.67	2.25	827147

Morse Taper Shanks – Tanged



- Made of alloy forged steel for long, durable service life
- Hardened to 56-60 HRC and ground to ensure maximum accuracy
- Shell end mill pilot total indicator runout <0.0004"

Shank	Arbor Diameter (Inch)	For Shell End Mills (Inch)	Code	Shank	Arbor Diameter (Inch)	For Shell End Mills (Inch)	Code
MT4	3/4	1-3/4 – 2	827149	MT5	1	2-1/4 – 2-3/4	827153
MT4	1	2-1/4 – 2-3/4	827150	MT5	1-1/4	3 – 3-1/2	827154
MT4	1-1/4	3 – 3-1/2	827151	MT5	1-1/2	4 – 5	827155
MT4	1-1/2	4 – 5	827152				

Screws

For Shell Mill Arbors

- Socket head arbor screws are designed for all shell end mill arbors
- Made of alloy forged steel for long, durable service life



Thread	Arbor Diameter (Inch)	Code
1/4-28	1/2	827156
3/8-24	3/4	827157
5/8-18	1-1/4	827159