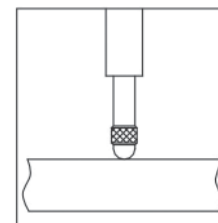
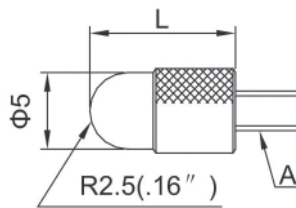




### Indicator Shell Points

- Steel
- NOTE: R2.5 is for M2.5x0.45  
R.16" is for #4-48UNF

L (mm)	A	Code
3.97	#4-48UNF	282753
5	M2.5x0.45	282754
10	M2.5x0.45	282755
15	M2.5x0.45	282757
20	M2.5x0.45	282759
25	M2.5x0.45	282760
30	M2.5x0.45	282762

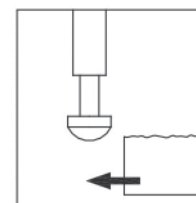
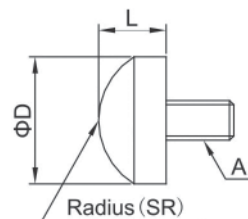


### Indicator Spherical Points



- Steel

L (mm)	A	D (mm)	SR (mm)	Code
5	M2.5x0.45	10	7	282763
3.18	#4-48UNF	12.7	7	282764

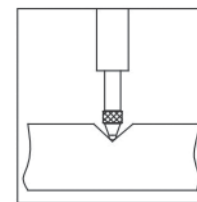
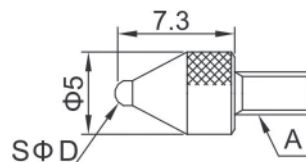


### Indicator Ball Points



- Steel and carbide

SØD (mm)	A	Material	Code
1	M2.5x0.45	Steel	282766
1.5	M2.5x0.45	Carbide	282767
1.8	M2.5x0.45	Steel	282768
2.5	M2.5x0.45	Carbide	282769
4	M2.5x0.45	Carbide	282770
4	#4-48UNF	Carbide	282771

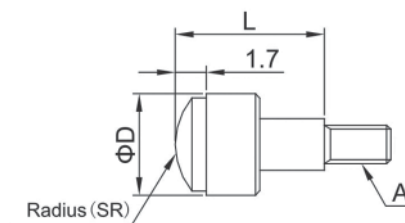


### Indicator Spherical Points



- Steel

L (mm)	A	D (mm)	SR (mm)	Code
5	M2.5x0.45	5.2	5	282772
10	M2.5x0.45	7.5	7	282773
10	M2.5x0.45	10.5	10	282774



### Indicator Conical Points



- Steel
- 60 degree tip angle

L (mm)	A	Code
10	M2.5x0.45	282775
12.7	#4-48UNF	282776

