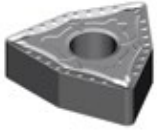


Turning Inserts

Carbide



WNMA & WNMG



ANSI	Grade	Chipbreaker	ØI.C. (Inch)	Thickness (Inch)	Radius (Inch)	Code
WNMA431UC	YG1001	UC	0.342	0.187	0.016	577560
WNMA432UC	YG1001	UC	0.342	0.187	0.031	577561
WNMA433UC	YG1001	UC	0.342	0.187	0.047	577562
WNMG331UF	YG801	UF	0.254	0.187	0.016	577563
WNMG332UG	YG801	UG	0.254	0.187	0.031	577564
WNMG431UF	YG801	UF	0.342	0.187	0.016	577565
WNMG432UG	YG801	UG	0.342	0.187	0.031	577566
WNMG433UR	YG801	UR	0.320	0.187	0.047	577567

Call your Local KAR Distributor
for all your KAR needs!

Find them at WWW.KAR.CA,
click FIND A DISTRIBUTOR