

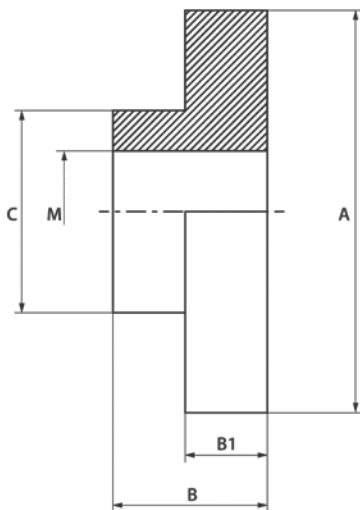
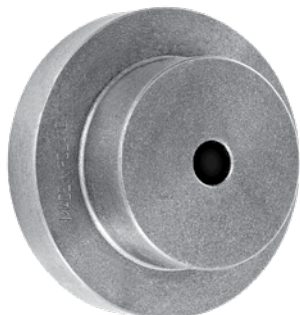


Lathe Chuck Accessories

For Bison Lathe Chucks

Threaded Back Plates – Cast Iron

- Rough finish



Series 8205

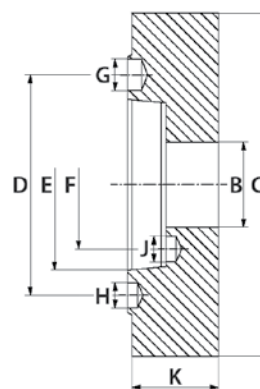
For Chuck Diameter (Inch)	D (Inch)	d (Inch)	D1 (Inch)	K (Inch)	L (Inch)	Weight (lbs)	Code
6-1/4	6.70	0.98	3.46	0.98	2.20	12.0	355664
8	8.30	0.98	4.02	1.18	2.83	22.0	355665
12-1/2	12.30	1.97	6.77	1.26	4.02	66.0	355667
15-3/4	16.34	2.76	9.06	2.17	4.92	154.0	355668
25	25.20	4.72	11.81	3.35	7.09	496.0	355670

For Independent Chucks – Series 8262

For Chuck Diameter (Inch)	D (Inch)	d (Inch)	D1 (Inch)	K (Inch)	L (Inch)	Weight (lbs)	Code
6-1/4	3.94	0.79	2.95	1.18	2.17	8	355671
5	5.12	1.18	3.74	1.38	2.56	11	355672
10	7.09	1.57	4.72	1.97	3.35	25	355673
12-1/2	8.66	2.17	5.51	2.36	3.74	49	355674
15-3/4	10.63	2.95	7.48	2.36	5.51	95	355675
20, 25	11.02	3.54	7.87	2.36	5.51	99	355676

Type A Back Plates – Series 8212

- Semi-machined
- Rough on chuck side
- For plain back self-centering and independent chucks



For Chuck Diameter (Inch)	Taper Size	B (Inch)	C (Inch)	D (Inch)	E (Inch)	F (Inch)	G (Inch)	H (Inch)	J (Inch)	K (Inch)	Weight (lbs)	Code
5	6	2.16	5.24	5.25	4.19	3.25	0.77	0.53	0.53	1.30	6.00	355650
6	5	1.50	6.38	4.13	3.25	2.44	0.64	0.47	0.47	1.38	10.52	355652
8	5	1.50	8.39	4.13	3.25	2.44	0.64	0.47	0.47	1.38	20.59	355653
8	6	2.13	8.39	5.25	4.19	3.25	0.77	0.53	0.53	1.52	20.00	355654
10	6	2.13	10.75	5.25	4.19	3.25	0.77	0.53	0.53	1.52	34.87	355655
10	8	3.15	10.75	6.75	5.50	4.37	0.95	0.67	0.67	1.79	38.35	355656
12	6	2.13	12.52	5.25	4.19	3.25	0.77	0.53	0.53	1.52	48.42	355657
12	8	3.15	12.52	6.75	5.50	4.37	0.95	0.67	0.67	1.79	54.43	355658
16	8	3.15	15.94	6.75	5.50	4.37	0.95	0.67	0.67	1.79	92.47	355659
16	11	5.12	15.94	9.25	7.75	6.50	1.16	0.79	0.79	2.09	97.75	355660
25	11	7.59	25.00	9.25	7.75	-	-	-	-	1.77	158.00	355662